



St. George's University

Grenada, West Indies



# Table of Contents

Dean's Introduction .....	3	My UK Experience – Salma Mirza .....	37
Associate Dean of Clinical Studies UK .....	3	My UK Experience – Anthony Crisafio .....	38
Members of the UK Dean's Advisory Board .....	5	My UK Experience – Zuzana Magdolen .....	38
<b>The UK Clinical Program</b> .....	7	<b>UK Training Days</b> .....	39
UK Administrative Office .....	7	Introductory Workshop on the NBME Exam .....	39
SGUSOM United Kingdom .....	7	Emergency Medicine Simulation Course .....	39
UK Start Dates and How to Arrange Your Placement .....	8	<b>Office of Career Guidance in the UK</b> .....	39
Visa Information for Students Entering the UK Clinical Programme .....	10	OCG Contact Information .....	39
UK Flowchart of Pathway to Graduation .....	12	Pathways to UK Licensure for SGUSOM Students .....	39
The UK Clinical Programme .....	12	<b>Student Services</b> .....	40
The UK Clinical Training Centres .....	13	<b>SGISM Mentoring Program</b> .....	41
Location of the UK Affiliated Hospitals .....	14	SGISM Mentoring Programme in the UK .....	41
<b>Basic Organisation of Healthcare Delivery in the UK</b> .....	14	<b>A to Z of Other Information</b> .....	41
<b>UK Hospital Affiliates</b> .....	16	Accommodation .....	41
North Middlesex University Hospital .....	16	Accommodation Costs .....	42
St Ann's Hospital, London .....	17	Banking .....	42
Stoke Mandeville Hospital .....	18	Clothing/Dress Code .....	42
Watford General Hospital .....	19	Concerns/Complaints .....	43
Sheepcot Medical Centre .....	20	Currency .....	43
Norfolk & Norwich University Hospital .....	21	Electricity .....	43
Hellesdon Hospital .....	22	Electronic Log (PEL) .....	43
Queen Elizabeth the Queen Mother Hospital .....	23	Evaluation of Programmes .....	44
St Martin's Hospital .....	24	Insurance .....	44
William Harvey Hospital .....	25	Licensure Applications .....	44
Russells Hall Hospital .....	26	Medical Treatment .....	44
North Hampshire Hospital .....	27	Payment of Accounts .....	44
Poole General Hospital .....	27	Registration with the Police .....	44
Royal Hampshire County Hospital .....	28	SGUSOM Student Membership of the British Medical Association (BMA) .....	45
St Ann's Hospital, Poole .....	29	SGUSOM Student Membership of the Royal Society of Medicine (RSM) .....	45
The Adam Practice .....	30	Signature of School Official .....	45
Electives Offered at UK Hospitals .....	31	Student Reimbursements .....	45
<b>UK Program Experiences</b> .....	32	Transport .....	46
A UK Director of Medical Education's Story .....	32	Textbooks & Web Based Educational Assignments for Independent Learning .....	46
My UK Experience – Derrick Lamount Mobley II .....	33	US Office - Great River .....	47
My UK Experience – Jayakrithi Krishnan .....	34	Vaccinations and Immunisation Requirements .....	47
My UK Experience – Jan Wen Wei .....	35	Water .....	47
My UK Experience – Jose Verduzco .....	36		

## Dean's Introduction

We are delighted to welcome you to the clinical phase of your SGU medical education in the UK. You've worked hard and prepared yourselves well. We know this is an exciting time for you as you transition from the classroom to the hospital and clinic settings. You will be working with patients, learning from experienced clinicians, and applying your knowledge to real-life situations.

As you embark on this journey, we encourage you to embrace the challenges and opportunities that come your way. You will be exposed to a wide range of medical conditions and will have the chance to work with patients from diverse backgrounds. This is an opportunity to develop your clinical skills, build relationships with patients and colleagues, and make a difference in the lives of others.

We wish you all the best as you commence this next phase of your medical education.

-Dean of School of Medicine, Marios Loukas, MD, PhD and Senior Clinical Dean, Robert T. Grant, MD, MSc, FACS

## Associate Dean of Clinical Studies UK

*As Associate Dean of Clinical Studies UK, Professor Stoker has responsibility for the academic aspects of the clinical programme in the UK. He reports to Robert T. Grant, MD, MSc, FACS the SGU Senior Clinical Associate Dean and Dean of the School of Medicine Marios Loukas, MD, PhD.. Dean Stoker is supported by the UK Deans' Advisory Board, consisting of the UK Associate Dean of Students, the UK Assistant Associate Dean of Students and Associate Director of Career Guidance UK and the seven UK Departmental Associate Chairs. Professor Stoker was a Consultant General and Upper GI Surgeon in London and for 30 years has been closely involved with undergraduate medical education at St George's University School of Medicine. He has held Clerkship Director and Director of Medical Education posts in the past and was the UK Chair of the Department of Surgery for SGU for 12 years. He has extensive experience of London Medical School education having been Undergraduate Sub-Dean at North Middlesex University Hospital, and having sat on the University College London Undergraduate Education Committee for many years.*

### **Message from the UK Associate Dean To St George's students**

Greetings! You will have already experienced from your time spent studying the basic medical sciences on the island of Grenada, the amazing educational value of study combined with travel. So, when you come to begin clinical training, your basic science knowledge will have vastly increased, but your knowledge of other cultures will have also further enriched your life experience which will remain with you forever. This makes St. George's International University School of Medicine unique, and you are strongly encouraged to continue to take advantage of combining your clinical training with travel. This is why St George's is truly international, offering medical education on three

continents. You therefore have a golden opportunity to participate in clinical training in both the UK and the USA, a course strongly recommended and rightly endorsed by the School. Medical schools' curricula are increasingly focusing on culture and ethnicity to produce doctors adequately trained for the global world in which we now live. St. George's has been in the vanguard of this approach for many years.

The UK Clinical Faculty are very proud of their long and close association with St George's and its students which began in 1979 and is a tradition they all wish to maintain.

The 14 Affiliated National Health Service Hospitals where you will be taught are all very busy with an unsurpassed wealth of clinical material both in variety and number. Emphasis is on out-patient clinical teaching, ward rounds and theatre time, as well as significant study time.

Students give regular clinical presentations, with close attention being paid to the art of taking a focused history and the learning of patient centred communication skills. This stresses the importance we place on the humanistic and empathetic aspects of medicine - the Art of the Science. Given the importance of the end of core NBME exams which all students must pass in order to graduate, great emphasis is placed on teaching clinical knowledge, but physical examination is also taught and assessed, thereby building on the clinical skills learnt in Grenada. Teaching is often on a one-to-one basis.

Our Administrative Head Office is in Winchester and we have fully trained staff who will advise you about your placements and accommodation and will answer any other queries you might have. Our staff contact details can be found in the brochure. Each hospital has a Student Co-ordinator who is there to help you with accommodation, timetables

and any social queries or concerns, and there is also a Director of Medical Education who is overall responsible for teaching at each Hospital. The DME is assisted by Clerkship Directors for all Core rotations, who will guide you through your timetables and also aid you at the mid-core and final assessment.

All hospitals have excellent internet access, and have libraries containing standard textbooks from the School's recommended reading list many on-line medical journals. Given the importance of the NBME exams we now have a Workshop for you to attend at the beginning of your UK attachments, introducing you to clinical work, and how to approach these crucial exams. We also have a Mentoring scheme where all students can have access to a mentor.

All students arriving in the UK do a SIM Lab simulation course on critical illness which also emphasises communication skills. You will also have continual open access to postgraduate career advice through the UK Office of Career Guidance.

In the past, primary care teaching in the UK was confined to Emergency Medicine but we now have an increasing number of affiliated General Practices who teach General Practice/Family Medicine. They offer six-week cores, preferably at the end of the third year, and four-week electives in the fourth year.

Given the relatively small size of our country, travel is easy, by train or bus or car; no need for high expenditure on air fares once you are here. The UK is also a great place to visit with its long and great history, traditions, art, architecture, music, theatre, countryside and some wonderful old English pubs, so it's a great place for extra-curricular activities including sport. Some hospitals have access to sporting centres and gymnasias.

Please consider coming to the UK for some of your clinical training and witness the National Health Service, which since its inception in 1948 has provided healthcare to all patients free at the point of delivery.

**-Mr David L Stoker BSc MBChB MD FRCS(Ed) FRCS(Eng)**

# Members of the UK Dean's Advisory Board

Professor and Associate Dean of Clinical Studies UK

Mr David Stoker BSc MBChB MD FRCS(Ed) FRCS(Eng)

Mr Stoker is a General Surgeon from Edinburgh who was selected as Consultant to the North Middlesex University Hospital London in 1995, with appointments there including Associate Medical Director, Divisional Director and Undergraduate Sub-Dean. He was also a Consultant to University College London Hospitals and initiated their Department of Oesophagogastric Cancer Surgery in 2004. He has an interest in undergraduate education and was a Senior Examiner for both UCL and SGU Final Exams. He has taught SGU students since 1992, holding positions as Clerkship Director, and DME, before being appointed UK Associate Chair of Surgery in 2011. He became UK Associate Dean of Clinical Studies in July 2022, and is involved with NBME training, and monitoring of student and hospital performance.

Professor, Assistant Dean of Students UK and Associate Chair of Surgery

Mr Lee Dvorkin MD FRCS

Wessex & London before being appointed as a Consultant Surgeon at the North Middlesex Hospital, London in 2011. He is also an Honorary Senior Lecturer at UCL. Mr Dvorkin has an interest in undergraduate and postgraduate education has been a Training Programme Director and Undergraduate Surgery Lead. He has been actively involved with St George's since 2011, having held positions of Clerkship Director for Surgery and DME.

Associate Professor and Assistant Dean of Academic Studies UK

Dr Timothy Owen MBChB MRCP Msc.

Assistant Professor and Assistant Dean of Academic Advising UK

Ms Beryl De Souza MPhil BSc(Hons) MBBS FRCS(Eng) MEd

Beryl De Souza trained as a Biochemist and completed an Masters of Philosophy in nerve regeneration before studying Medicine at St Bartholomew's Hospital as a graduate student. She trained as a Plastic Surgeon in London and is Honorary Clinical Senior Lecturer in Plastic Surgery at Imperial College and is a Postgraduate tutor at Central North West London Lead Provider. She has a research interest in wound

healing and scars and medical education. Beryl has been involved in teaching SGU students Surgery and providing careers advice for the UK Foundation Programme.

Professor & Associate Chair of Medicine

Dr Jimmy Li Voon Chong BA MB BCH BAO MD MRCP FRCP

Dr Chong graduated from Trinity College Dublin. He was appointed Consultant Physician, Diabetologist and Endocrinologist in Winchester in 2000. He has been involved in undergraduate and postgraduate education over the years holding various leadership roles and is national and international chair of examiners for the Royal College of Physicians. Dr Chong has taught St George's medical students since 2000, has held the post of clerkship director, currently DME and UK Associate Chair for Medicine.

Associate Professor and Associate Chair of Family Medicine and Emergency Medicine, Director of MSRI UK

Dr Adnan Saad MBBS Bsc (Hons) DFFP PCME MRCS MRCGP M.Phil

Dr Saad qualified from Guy's & St Thomas' Hospitals, London, in 1995. He is a Full Partner, the Care Quality Commission lead and chief trainer for Sheepcot Medical Centre for resident trainees, FY2 doctors and medical students. Dr Saad has been involved in the interview selection panel for Imperial College School of Medicine, from whom he has been awarded for his outstanding work and contribution. Dr Saad provides joint injections and minor surgery at Sheepcot Medical Centre. He is a medico legal expert, working closely with solicitors and the Courts. When time allows he loves watching sci-fi, action, horror movies and box sets, and also enjoys training at the gym and a good meal out.

Professor and Associate Chair of Obstetrics & Gynaecology

Mr Tim Hillard BM DM FFSRH FRCOG

Timothy Hillard graduated from Southampton University Medical School and spent most of his Obstetrics & Gynaecological training at King's College Hospital London where he developed his special interests in Uro-gynaecology and Menopause and completed his MD thesis on Osteoporosis. He was appointed as a Consultant in Poole in 1994 and has held a variety of senior positions within the Trust including Associate Medical Director. He has a longstanding interest in Patient Safety and Quality Improvement and until recently was the RCOG (Royal College of Obstetrics & Gynaecology) lead for patient safety. He has previously been Clerkship Director for St George's University at Poole Hospital for a number of years and was appointed Associate Chair of Obstetrics & Gynaecology in April 2019.

Associate Professor and Associate Chair of Paediatrics

Dr Mary-Anne Morris MB BS MD MRCP FRCPCH

Dr Morris graduated from St Thomas Hospital, University of London. She completed her training in London before moving to Norwich as a Consultant Paediatrician in 2001. She has an interest in undergraduate and postgraduate education and is an Honorary Senior Lecturer at University of East Anglia. She has been actively involved with St George's as a teacher since 2001, as Clerkship Director for paediatrics since 2007 and as a Final Clinical Competence Examiner.

Associate Professor and Associate Chair of Psychiatry

Dr Brian Douglas MB ChB MRCPsych

Dr Brian Douglas graduated from Glasgow University Medical School in 1988 and trained in London at Guys and St Bartholomew's Hospitals in Adult General Psychiatry. He became a Consultant Psychiatrist at St Ann's Hospital, London in 2001 for Barnet, Enfield and Haringey Mental Health NHS Trust. He has previously been Clerkship Director and DME for St George's University at St Ann's and has been the UK Associate Chair of Psychiatry since 2012. He was formerly an Honorary Clinical Senior Lecturer at UCL Medical School, London and the Trust's Director of Medical Education. Since 2020 he has been an Honorary Tutor in Medical Education at Barnet, Enfield & Haringey Mental Health NHS Trust.

# The UK Clinical Program

---

## UK Administrative Office

**Alison Allen**

**Manager of Clinical Education Operations UK**

[ukclinical@sgu.edu](mailto:ukclinical@sgu.edu)

Main Responsibilities:

UK Placements Third Year Cores, UK Visas, Study Days, Licensure and UK Foundation programme

**Marsha Beck**

**Clinical Student Administrator**

[ukclinicalsupport@sgu.edu](mailto:ukclinicalsupport@sgu.edu)

Main Responsibilities:

Elective Forms, Mandatory Forms, Electronic Assessments, 4th Year Elective Scheduling

**Sarah Robertson**

**Programme Coordinator**

[ukadminsupport@sgu.edu](mailto:ukadminsupport@sgu.edu)

Main Responsibilities:

Accounts, Reimbursements and Hospital Billing, Academic Meetings, SGU UK Brochure

**If you would like to contact the UK Office, please use the details below:**

**Address:**

St George's International School of Medicine

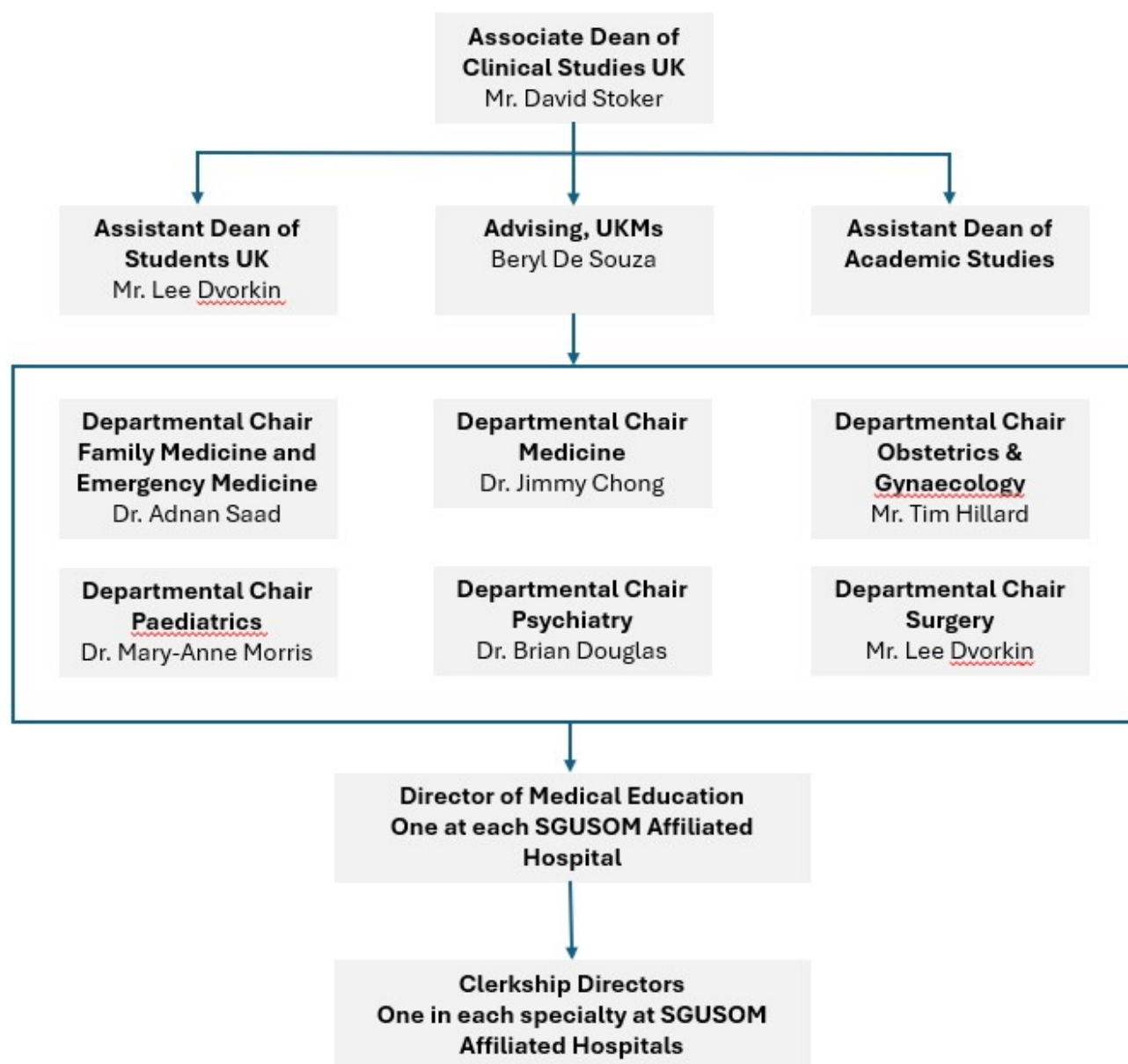
**Telephone:**

+44 7435 809364

**Website:**

<https://mycampus.sgu.edu/group/uk-clinical/home>

## SGUSOM United Kingdom



## UK Start Dates and How to Arrange Your Placement

All clinical clerkships are arranged through the Office of Clinical Education Operations. The Office of Clinical Education Operations encompasses the UK Clinical Education Operation team. Placement for UK hospitals is done with the UK Clinical Education Operations team.

### Students COMMENCING their 3rd Year clinical rotations

All students entering their first clinical rotation MUST start on one of our UK start dates which are shown below:

Start Dates	
19 August 2024	17 February 2025



30 September 2024	31 March 2025
11 November 2024	12 May 2025
6 January 2025	23 June 2025

### **3rd Year students who have already completed one or more clinical rotations**

Students who have already completed 1 or more of their clinical rotations in the United States and wish to come to the United Kingdom for further 3rd year core rotations must also start on one of the above dates.

### **Placement Process**

Once you have submitted all the required clearances for placement, the US Clerkship Placement Team will notify the UK Office who will then process your placement request according to availability. You will be given the appropriate UK visa paperwork depending on how long you are planning to study in the UK. If you will be studying in the UK for longer than 6 months, you will be provided with a CAS number for your UK Student Visa application.

The UK Office Staff will assist you with any queries which you may have prior to and during your time in the United Kingdom. We look forward to seeing you in the United Kingdom and will endeavour to make your transition from the Basic Sciences to the Clinical Programme as smooth as possible.

UK Office contact details

**Email:** [ukclinical@sgu.edu](mailto:ukclinical@sgu.edu)

### **4th Year students wanting to complete electives**

UK electives must be requested using UK Elective request forms located on the Clinical Portal. 4th year students can start any elective on any date throughout the year as long as it is a Monday. Electives must be a minimum of 4 week duration in the UK.

### **Clinical Placement Preference Form**

You will be asked to complete the Clinical Placement Preference form during Term 5 of Basic Sciences and you should request UK placement on this. In addition, you are also required to complete the UK Clinical Placement Request Form if you want UK placement. In order to have your UK Application reviewed, you must have no holds, be health cleared and have completed all of your web-based Sakai requirements. The UK Clinical Education Operations Team will review your application and contact you with the next steps for placement. You will be given the appropriate UK visa paperwork depending on how long you stay in the UK. If you will be studying in the UK for longer than 6 months you will be provided with a CAS number for your UK Student Visa application. If you have questions regarding immigration, please contact our Immigration team at [immigrationsupport@sgu.edu](mailto:immigrationsupport@sgu.edu).

We are always here to help!

# Visa Information for Students Entering the UK Clinical Programme

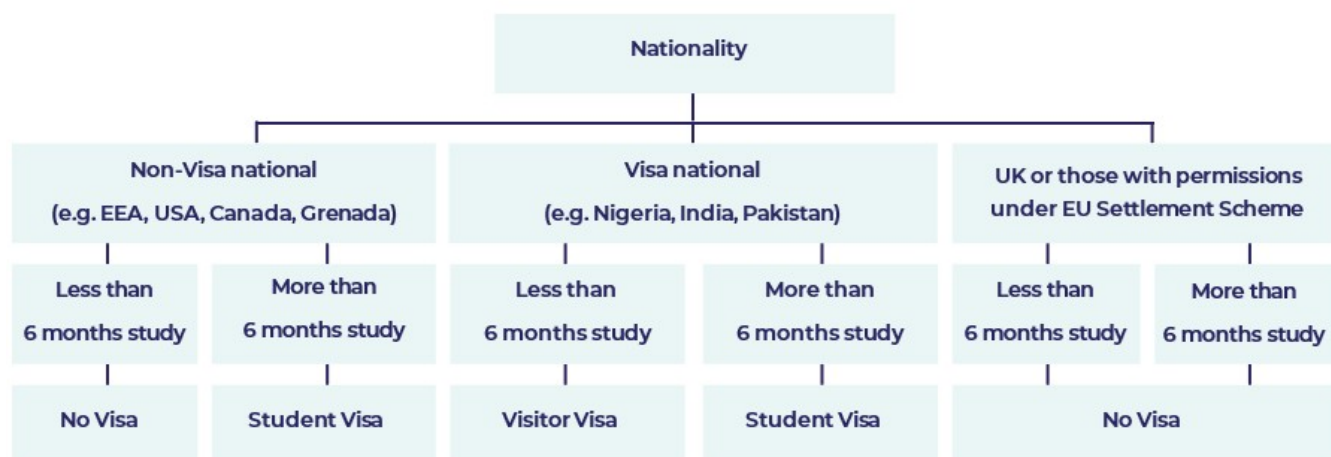
As of 1 December 2020 there are 2 types of visa for SGUSOM students wanting to come to the UK, a Student Visa or a Visitor Visa. The length of time you are planning to study in the UK determines which visa you will need.

If you are planning to study for less than 6 months and hold a visa national passport you will need to obtain a Visitor Visa. If you hold a non-visa national passport (USA, Canada, Grenada, Trinidad & Tobago), you will NOT need a visa to study in the UK for less than 6 months.

If you will be studying in the UK for longer than 6 months you will need to apply for and obtain a Student Visa to enter the UK. The UK Office will supply you with a CAS number for your visa application.

If you hold a UK passport or hold permissions under the EU Settlement Scheme you do not currently need a visa of any type to study in the UK for any length of time but this may be subject to change.

The diagram below summarises the current visa requirements for studying in the UK:



## Find out what type of visa you need to enter the UK

Please follow the link below and input your personal information to find out if you need a visa to come to the UK and specifically what type of visa you require: [www.gov.uk/check-uk-visa](https://www.gov.uk/check-uk-visa)

### Visitor Visa

- Study period of 6 months or less
- Visitor Visa required if you are a visa national (e.g Nigeria).
- You need to apply for leave to enter on a Visitor Visa before travelling to the UK.
- Supporting letter provided by the UK Office
- Can only be used ONCE to enter UK for study period of <6 months
- NO visa necessary if you are a non-visa national (e.g USA, Canada, Grenada, Trinidad & Tobago)

### Student Visa

- Study period of more than 6 months
- Required if returning to UK having previously studied for <6 months
- CAS number required from UK Office to submit with visa application

### **CAS Numbers**

All students are required to provide specific information to the SGISM Office in the UK in order that a CAS number can be issued. This includes passport number, nationality, date of birth and country of birth. Please note that a CAS CANNOT be issued until a student has met all the SGUSOM requirements to enter the Clinical Programme. When you submit a visa application, all supporting documents listed in the gov.uk application form must be submitted at the same time as your application. This is your personal responsibility.

### **UK Passport holders and those holding permissions under the EU Settlement Scheme**

Students holding a UK passport or permissions under the EU Settlement Scheme do not currently need a visa to enter the UK and will be issued with their placement details as soon as they have met all SGUSOM requirements to enter the Clinical Programme.

### **Compliance with the terms of your Visa once you are in the UK**

On arrival in the UK you must immediately provide the following documents to the UK SGISM Office in Winchester:

- A copy of the page in your passport showing your personal details and passport number
- A copy of the page in your passport showing your UK visa/entry stamp or a copy of your BRP card if you have been issued with one and
- A signed copy of the Mandatory Information Form which you will receive from your Student Coordinator at your hospital.

You must also immediately report any changes in your circumstances to the UK SGISM Office in Winchester e.g change of contact details, amendments to your schedule, absence from your rotations or leaving the UK for any reason.

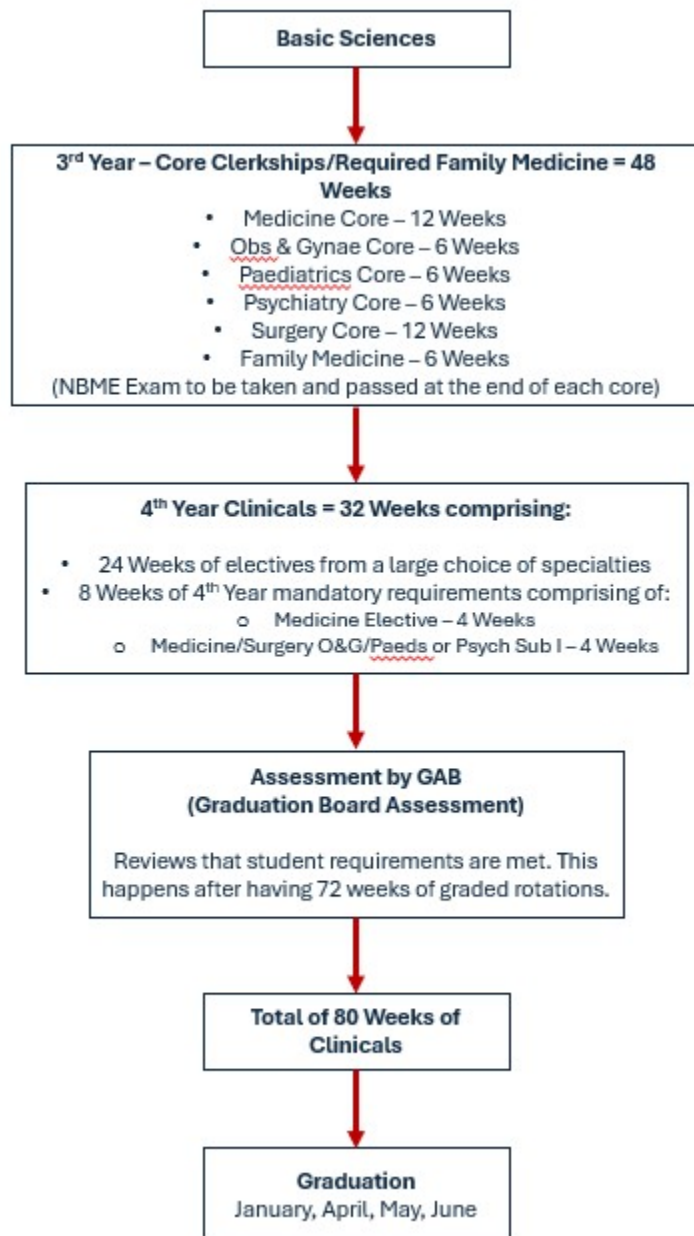
### **Visa Extensions**

It is not possible for SGUSOM students to switch visa categories from within the UK. You will be required to leave the UK and apply for a new visa from your home country.

If you entered the UK on a Student Visa, you are able to apply for an extension of this visa from within the UK. You will need to request a new CAS number from the UK Office for the extension application

Information on how to apply for UK Visitor and Student visas can be found on the following website:  
[www.gov.uk/apply-to-come-to-the-uk](https://www.gov.uk/apply-to-come-to-the-uk)

# UK Flowchart of Pathway to Graduation



## The UK Clinical Programme

All students entering the UK Clinical Programme for their first core rotation will be placed at one of the UK Core hospitals. These hospitals are part of a concept of Clinical Training Centres which have been established in the UK. Core rotations may only be taken at a Core hospital. Students wishing to undertake sub internships and electives can complete these at any of the UK hospitals. Students are now required to remain within the CTC they were initially allocated for the initial 18-24 weeks. After this it is possible to move to another hospital in a different CTC to complete your clinical requirements if places are available.

# The UK Clinical Training Centres

## **The Greater London Clinical Training Centre** **Chairman Mr Arnold Goede**

North Middlesex University Hospital: Cores and Elective  
St Ann's Hospital, London: Cores and Electives (Psych only)  
Stoke Mandeville Hospital: Cores and Electives  
Watford General Hospital: Cores and Electives  
Sheepcot Medical Centre: Family Medicine (GP), Cores and Electives  
Berrycroft Community Health Centre: Family Medicine (GP), Cores and Electives  
The Lawrence House Group: Family Medicine (GP), Cores and Electives

## **The East Anglia Clinical Training Centre** **Chairman Dr Jon Wilson, DME at Hellesdon Hospital**

Hellesdon Hospital: Cores and Electives (Psych only)  
Norfolk & Norwich University Hospital: Cores and Electives

## **The West Midlands Clinical Training Centre** **Chairman Prof Saud Ishaq DME at Russells Hall Hospital**

Russells Hall Hospital: Cores and Electives

## **The Wessex Clinical Training Centre** **Chairman TBC**

North Hampshire Hospital: Cores and Electives Poole General Hospital: Cores and Electives  
Royal Hampshire County Hospital: Cores and Electives St Ann's Hospital, Poole: Cores (Psych only)  
The Adam Practice: Family Medicine (GP), Cores and Electives

## **The South East England Clinical Training Centre** **Chairman TBC**

Queen Elizabeth the Queen Mother Hospital - Cores only  
St Martin's Hospital - Cores and Electives (Psych only)  
William Harvey Hospital - Cores only  
Faversham Medical Practice: Family Medicine (GP), Cores and Electives

## Location of the UK Affiliated Hospitals



## Basic Organisation of Healthcare Delivery in the UK

The UK National Health Service was launched in 1948 and has grown to become the world's largest, most efficient, egalitarian, and comprehensive publicly funded health service in the world. It is funded centrally from national taxation, and its core principle is that it is free at the point of delivery, apart from charges for prescriptions, optical and dental services. The rights of patients, carers, families, staff, and the pledges of the NHS are set out in an NHS Constitution.

Before the Covid pandemic of 2020/21 the NHS employed more than 1.5 million people including 36,000 general practitioners, 280,000 nurses, midwives, and health visitors, 20,000 ambulance staff, 135,000 scientific, therapeutic, and technical staff, 35,000 managers and 45,000 consultants.

The service in England treated 1 million patients every 36 hours, and total spending by the Department of Health and Social Care in 2019/20 approximated £143 billion. This is set to rise to £163 billion by 2023. UK health expenditure amounts to 11.9% of GDP.

The NHS is divided into two sections called Primary and Secondary Care. Primary Care is the first point of contact with the service for most people and is delivered by a wide range of independent contractors including General Practitioners (GPs), dentists, pharmacists, and optometrists. Secondary Care can be either elective or emergency. Elective care means planned specialist medical or surgical care, usually in a hospital setting, following referral from a primary or community health professional such as a General Practitioner (GP, or Family Practitioner in the US). The term Tertiary care is used to describe some highly specialised areas for patients with complex needs.

Integrated Care Systems (ICSs) have recently taken over from Clinical Commissioning Groups or CCGs. These are area-based agencies responsible for planning local health services and reducing inequalities. England is being divided into 42 ICSs in the largest legislative overhaul in a decade (July 2022). They will vary a lot in their structures and complexity and be overseen by an Executive body - NHS England and will integrate care to improve health outcomes in all age groups and across previous boundaries such as local authorities, public health and mental health services.

## **PRIMARY CARE**

Primary medical care in the UK is delivered by GPs who have been trained in the full range of common medical and surgical conditions affecting the population. The majority are now organised into Health Centres or

Practices containing up to 20 GPs working as a team to provide for their local patients. Each GP has an average of 2250 residents registered with their personal practice. All UK residents must register with a GP, and they will then obtain free healthcare for illness, routine health checks, vaccinations etc. The community-based GP is therefore the cornerstone of the NHS providing most medical care in the UK.

Healthcare professionals, including medical students, should be registered with a GP close to where they live.

GPs deal mainly with chronic health problems, and less urgent acute disorders that can be managed at home. When a patient sees a GP with a more complex problem, the GP will refer them for an outpatient appointment with a consultant specialist. The waiting time for a consultation should be a few weeks and should not exceed 18 weeks to completion of treatment, although multiple pressures have now seriously eroded these targets.

When a patient has a more acute problem, they may consult a GP for an urgent appointment or telephone consultation (dial 111), with onward referral to acute hospital services via an Accident & Emergency (A&E) Department (ER in the US) or an Acute Admissions Unit (AAU). In a serious emergency, patients may self-present to A&E or summon an ambulance (dial 999) directly to their location, where after assessment by paramedics, they will, if necessary, be taken directly to the nearest A&E department. Targets for A&E waiting times of 4 hours were set centrally but are often breached.

## **SECONDARY CARE**

The basic unit of secondary care is the NHS Trust. There are 219 Trusts overseeing 1,600 NHS hospitals and specialist care centres. Within NHS hospitals, senior clinicians ranked as consultants (Attendings in the US) are organised into teams within the same specialty (General Medicine, Cardiology, Gastroenterology). Most consultants will be ward-based and will provide emergency services on a rota as well as more specialised services within their area of expertise in clinics (out-patients). Most consultants supervise teams of qualified doctors undergoing specialist training. A typical department will comprise several consultants, a few middle-grade doctors – Trust doctors or Specialist Registrars (SpRs) - supported by more junior doctors known as Core Trainees (CT1 or 2) and underpinned by several newly qualified doctors in the first and second years (FY1 or 2) of post-graduate training.

Consultants' timetables include in-patient ward rounds, supported by trainees, with further time spent in clinics, theatres or with administration. Most consultants will work on an emergency rota, commonly referred to as "on take", assessing new emergency admissions within their specialty, and admitting patients to hospital when necessary.

An SGU student in the UK is typically attached to a specific consultant's department where they will work, observe, and be taught by all the clinical staff, directed by the consultant. Teaching includes skills in history taking, physical examination, practical procedures, and the development of clinical management plans. The student will attend with the team in A&E when on take, and in clinics, theatres and on ward rounds. Learning is backed up by a range of academic activities including tutorials, seminars, lectures, practical sessions, and larger educational meetings such as Grand Rounds and multidisciplinary team meetings (MDTs).

The NHS is the most comprehensive free healthcare system in the world and is immensely valued by the UK public. It has provided the widest ranging and the most intensive learning opportunities of any international healthcare system.

Covid challenged all health systems, with previous emergency medical planning focused on pandemic 'flu. To date (October 2022) there have been 23.8 million cases of Covid in the UK, with 208,000 deaths, including several hundred healthcare workers. In 2020, routine services were suspended for months and are only now recovering, with long waits for elective surgery and clinic appointments. The NHS only survived due to the efforts of very dedicated staff.

Recruitment and retention remain serious issues, with more staff taking early retirement or leaving healthcare, and it is hoped that ICSs will help to address these issues.

The Covid pandemic also marked great scientific achievements, and in the UK we deployed the world's first Covid-19 vaccinations (AstraZeneca) in December 2020. This technology will undoubtedly lead to further advances in the treatment of many diseases, including cancer over the next decade, and only you, as the doctors of the future will be able to fully appreciate the long-term consequences of the past 2 years.

*-David L Stoker MD FRCS*  
SGU Associate Dean of Clinical Studies (UK)

## UK Hospital Affiliates

---

### North Middlesex University Hospital

**Clinical Training Centre:** Greater London Clinical Training Centre

**Address:**

Stoke Mandeville Hospital  
Mandeville Road, Aylesbury, Buckinghamshire, HP21 8AL

**Telephone No:** 01296 315000

**Cores Available:** Medicine, Surgery, Family Medicine

**Electives Available:** See [Electives Offered at UK Hospitals](#)

**Website:** [www.buckshealthcare.nhs.uk](http://www.buckshealthcare.nhs.uk)



**Director of Medical Education:** Mr Arnold Goede

**Student Coordinator:** Safiyah Shah

**Contact Details:**

01296 316892 option 4 (Telephone)

[safiyah.shah1@nhs.net](mailto:safiyah.shah1@nhs.net)

**Accommodation type:** Single en-suite study bedroom with shared kitchen & lounge

**Accommodation cost per month:** £560 including all bills

**Internet access in bedrooms:** Yes (Wi-Fi)

**Immunisation requirements:** Diphtheria, Tetanus, Polio, Measles, Mumps, Hep B, Rubella, Varicella & TB

**Travel time to London by train:** 25 minutes

***The Trust & the Hospital***

**The North Middlesex University Hospital**

NHS Trust operates a busy acute general hospital serving the communities of the London Boroughs of Enfield and Haringey, and surrounding areas. It serves a diverse and, in places, highly dependent population of approximately a quarter of a million people. The Hospital is approximately 12 miles from the centre of London. The Trust currently provides the following range of acute services: 24 Hour Accident and Emergency, a comprehensive range of diagnostic and outpatient department services, elderly medicine, elective surgical specialties, intensive care, high dependency care and coronary care, obstetrics & gynaecology, oncology, haematology, HIV/AIDS, diabetes, renal and cardiology, paediatric inpatients and outpatients and neonatal. Other facilities at the hospital include a dedicated 24/7 A&E for children, a diagnostics centre incorporating a £1.2 million 3-tesla MRI, 2 CT scanners, 4 ultrasound units and a mammography unit, a spacious outpatients department and a critical care unit.

## St Ann's Hospital, London

**Clinical Training Centre:** Greater London Clinical Training Centre

**Address:** St Ann's Road, London, N15 3TH

**Telephone No:** 0208 702 3000

**Cores Available:** Psychiatry ONLY

**Electives available:** Psychiatry - a range of sub-electives are available for example Drug & Alcohol Service, Forensics and Learning Disabilities

**Website:** [www.beh-mht.nhs.uk](http://www.beh-mht.nhs.uk)

**Director of Medical Education:** Dr. Matthew King

**Student Coordinator:** Suleman Bhana

**Contact Details:**

0208 702 3885 (Telephone)

[suleman.bhana@nhs.net](mailto:suleman.bhana@nhs.net)

**Accommodation type:** Single study bedroom in a 2 person shared flat (at N Middlesex University Hospital)

**Accommodation cost per month:** £625

**Internet access in bedrooms:** Yes

**Immunisation requirements:** Tetanus, Polio, Hep B, Hep C, Diphtheria, Rubella & TB

**Travel time to London by train:** 25 minutes

### ***The Trust & the Hospital*** **St. Ann's Hospital, London**

When rotating through North Middlesex University Hospital the psychiatry rotation is undertaken at St Ann's Hospital which has a specialist psychiatric unit offering an extensive range of services to the local community. The Hospital has a sizeable Mental Health Unit, consisting of an acute assessment ward, short stay unit, Eating Disorders Unit and the Home Treatment Unit.

## Stoke Mandeville Hospital

**Clinical Training Centre:** Greater London Clinical Training Centre

**Address:**

Stoke Mandeville Hospital  
Mandeville Road, Aylesbury, Buckinghamshire, HP21 8AL

**Telephone No:** 01296 315000

**Cores Available:** Medicine, Surgery, Family Medicine

**Electives Available:** See [Electives Offered at UK Hospitals](#)

**Website:** [www.buckshealthcare.nhs.uk](http://www.buckshealthcare.nhs.uk)

**Director of Medical Education:** Mr Arnold Goede

**Student Coordinator:** Safiyah Shah

**Contact Details:**

01296 316892 option 4 (Telephone)  
[safiyah.shah1@nhs.net](mailto:safiyah.shah1@nhs.net)

**Accommodation type:** Single en-suite study bedroom with shared kitchen & lounge

**Accommodation cost per month:** £560 including all bills

**Internet access in bedrooms:** Yes (Wi-Fi)

**Immunisation requirements:** Diphtheria, Tetanus, Polio, Measles, Mumps, Hep B, Rubella, Varicella & TB

**Travel time to London by train:** 25 minutes

### ***The Trust & the Hospital*** **Stoke Mandeville Hospital**

Buckinghamshire Healthcare NHS Trust is a major provider of community and hospital services in South Central England. Stoke Mandeville Hospital provides a wide range of services to Buckinghamshire and beyond including 24 hour Accident and Emergency, trauma, maternity, cancer care and outpatient services. The hospital also recently became a national bowel cancer screening programme site and has a regional burns and plastics unit providing specialist services to a wide spread of patients, as well as being the base for eye care for the area. The hospital has undergone extensive renovation in the past five years and new multi-million pound inpatient and outpatient buildings are now open. Stoke Mandeville Hospital is home to the internationally recognised National Spinal Injuries Centre, one of only 11 such centres of expertise in the UK. It is also a regional centre for burns care, plastic surgery and dermatology, and recognised nationally for its urology and skin cancer services.

## **Watford General Hospital**

**Clinical Training Centre:** Greater London Clinical Training Centre

**Address:** Vicarage Road, Watford, Hertfordshire. WD18 0HB

**Telephone No:** 01923 244366

**Cores available:** General Practice (FM) only at Sheepcot Medical Centre, Medicine, Obstetrics & Gynaecology, Paediatrics, Psychiatry, Surgery

**Electives Available:** See [Electives Offered at UK Hospitals](#)

**Website:** [www.westhertshospitals.nhs.uk](http://www.westhertshospitals.nhs.uk)

**Director of Medical Education:** Mr Neil Davies

**Student Coordinator:** Phyl O'Garro

**Contact Details:** 01923 217817 (Telephone) [phyl.ogarro@nhs.net](mailto:phyl.ogarro@nhs.net)

**Accommodation type:** Single study bedroom in shared 2 person flat, shared kitchen & bathroom

**Accommodation cost per month:** £500

**Internet access in bedrooms:** Yes

**Immunisation requirements:** Tetanus, Polio, Hep B, Rubella & TB

**Travel time to London by train:** 20 minutes

### ***The Trust & the Hospital*** **Watford General Hospital**

West Hertfordshire Hospitals NHS Trust provides acute healthcare services to a population of approximately half a million people living in West Hertfordshire and the surrounding area. The Trust also provides a range of more specialist services to a wider population. Watford General Hospital is one of three hospitals making up West Hertfordshire Hospitals NHS Trust. It is a large acute hospital offering first class emergency care, as well as providing a full range of other services. All major specialties are

covered including obstetrics & gynaecology, paediatrics, psychiatry, oral & maxillo-facial surgery and genito-urinary medicine. Watford General Hospital has the largest Acute Admissions Unit in the UK with 120 designated beds in a new unit, which includes diagnostics and pharmacy.

The Medical Education Centre (MEC) benefits from a designated clinical skills teaching room and regular teaching is scheduled for all students delivered by clinical skills facilitators supported by Junior Doctors. The MEC co-ordinates designated teaching for SGISM medical students who are also encouraged to attend the UK medical student and junior doctor teaching. Teaching will also take place in the clinical arena whenever possible. In addition to SGISM students the hospital accepts medical students from one of the main London teaching hospitals (UCL). Building good relationships with junior doctors is integral to learning and to support the medical students they are given membership of the onsite Junior Doctors Mess for the duration of their rotations at Watford General. There is an active Doctors Mess Committee, facilities in the Doctors Mess include Sky TV, pool and table football. Social events and lunches are arranged regularly.

## Sheepcot Medical Centre

**Clinical Training Centre:** Greater London Clinical Training Centre

**Address:** 6 Cunningham Way, Watford, Herts. WD25 7NL

**Telephone No:** 01923 660003

**Cores available:** General Practice (FM) only

**Electives Available:** General Practice (FM) only

**Website:** [www.sheepcotmedicalcentre.co.uk](http://www.sheepcotmedicalcentre.co.uk)

**Clerkship Director:** Dr Adnan Saad

**Student Coordinator:** Deborah Sanger

**Contact Details:**

01923 660007 (Telephone)

[deborah.sanger@nhs.net](mailto:deborah.sanger@nhs.net)

**Accommodation type:** At Watford hospital, single study bedroom in shared 2 person flat

**Accommodation cost per month:** £500

**Internet access in bedrooms:** Yes

**Immunisation requirements:** Tetanus, Polio, Hep B, Rubella & TB

**Travel time to London by train:** 30 minutes

### ***The Trust & the Hospital*** **Sheepcot Medical Centre**

Sheepcot Medical Centre has been a training practice for about 15 years. We are fully committed to meeting the training needs of the students/ trainees by opening them to a wide variety of GP roles under supervision. We pride ourselves in maintaining excellent standards of teaching and training through the high skills of our trainers and GPs as well as the highly organised management and administration team. The practice has been awarded for its high standard of teaching and training

medical students. The practice serves a population of about 11,000 patients allowing for a very wide range of pathologies- both acute and chronic, patients of diverse age, social, medical and psychological backgrounds. The Practice also has specialised clinics for minor surgery, child health development, contraception, implant and intrauterine device insertion and removal that the student may attend. Furthermore, we have close links with local nursing homes which provide a further wealth of pathology and learning opportunity for the attached trainees. Students will have an allocated clinical tutor whose responsibility it is to oversee their educational needs. The timetables will provide the opportunity for direct patient contact in a supervised setting with the doctors and nurses. They are encouraged to integrate with different team members in primary care, and take part in case-based discussion as well as attending multidisciplinary team meetings and practice meetings as well. Sheepcot Medical Centre has its own conference room and library which can be used for educational development. Furthermore, there are plenty of computer terminals should the student wish to access IT resources to further their educational needs.

## Norfolk & Norwich University Hospital

**Clinical Training Centre:** East Anglia Clinical Training Centre

**Address:** Colney Lane, Norwich, Norfolk. NR4 7UY

**Telephone No:** 01603 286286

**Cores available:** Medicine, Obstetrics & Gynaecology, Paediatrics, Surgery (Psychiatry at Hellesdon Hospital)

**Electives Available:** See [Electives Offered at UK Hospitals](#)

**Website:** [www.nnuh.nhs.uk](http://www.nnuh.nhs.uk)

**Director of Medical Education:** Mr Milind Kulkarni

**Student Coordinator:** Sophie Hickford

**Contact Details:** 01603 286898 (Telephone) [Sophie.Hickford@nnuh.nhs.uk](mailto:Sophie.Hickford@nnuh.nhs.uk)

**Accommodation type:**

Onsite – Single or double en-suite bedrooms with shared communal areas. Single rooms at £550 per month/ Double £605 per month. Offsite- private renting, house shares & rooms (single, double & en-suite) with shared communal areas. Prices on request from letting agencies.

**Accommodation cost per month:** Single Occupancy £570 Double Occupancy £625

**Internet access in bedrooms:** Yes

**Immunisation requirements:** Tetanus, Polio, Hep B, Rubella, Varicella & TB

**Travel time to London by train:** 2 hours

***Norfolk & Norwich University Hospital NHS Foundation Trust [NNUH]***

The Norfolk & Norwich University Hospital is a 1000-bed teaching hospital facility that opened in 2001. It houses a broad range of clinical disciplines which, along with the partner hospitals and General Practice within the East Anglian Clinical Training Centre, offers learning across the full scope of the SGU Clinical curriculum, including all core attachments and numerous electives. The NNUH is a teaching hospital in partnership with Norwich Medical school and adjacent to the main University of East Anglia

(UEA) campus and Norwich Research Park creating a vibrant academic and research environment to which all students are exposed during their studies. The faculty, as well as being clinicians with recognised regional and national profiles, are also highly trained clinical educators with a proven record of excellence in undergraduate and postgraduate training. Many attract tertiary referrals from across the East of England region to their specialised services. Students are therefore exposed to patients with a wide range of clinical problems and have opportunities to work within teams offering the most up to date, innovative treatments. Educational facilities on campus are based in the hospital, the Norfolk & Norwich Institute of Medical Education and the Bob Champion Research & Education Building and include Simulation, virtual reality and Clinical Skills laboratories and an extensive library. Norwich is a fascinating city with a wealth of historic and cultural interest from its Roman origins, through its Norman castle and 11th Century cathedral, to a multiplicity of modern arts, music and theatre venues. Being the most complete medieval city in the UK, it has a flourishing arts, music and cultural scene, superb independent as well as High Street shopping, and a heritage that is a delight to explore. It was also England's first UNESCO City of Literature. The surrounding county has beautiful wetlands [the Norfolk Broads], coastline and countryside providing a huge variety of sport and leisure activities.

## Hellesdon Hospital

**Clinical Training Centre:** East Anglia Clinical Training Centre

**Address:** Drayton High Road, Norwich, Norfolk. NR6 5BE

**Telephone No:** 01603 421421

**Cores available:** Psychiatry ONLY

**Electives Available:** Psychiatry ONLY

**Website:** [www.nsft.nhs.uk](http://www.nsft.nhs.uk)

**Director of Medical Education:** Dr. Jon Wilson

**Student Co-ordinator:** Zoe Baines

**Contact Details:**

07534 902691 (Telephone)

[zoe.baines@nsft.nhs.uk](mailto:zoe.baines@nsft.nhs.uk)

**Accommodation type:**

Onsite at NNUH – Single or double en-suite bedrooms with shared communal areas. Single rooms at £550 per month/ Double £605 per month.

Offsite- private renting, house shares & rooms (single, double & en-suite) with shared communal areas. Prices on request from letting agencies.

**Accommodation cost per month:**

Single Occupancy £570

Double Occupancy £625

**Internet access in bedrooms:** Yes

**Immunisation requirements:** Tetanus, Polio, Hep B, Rubella, Varicella & TB

**Travel time to London by train:** 2 hours

### ***The Trust & the Hospital*** **Hellesdon Hospital**

Psychiatric Services in Norfolk are provided by Norfolk and Suffolk NHS Foundation Trust (NSFT), which provides inpatient and community mental health services across the large geographical area of Norfolk and Suffolk.

In the UK the focus of psychiatric care is in the community, with inpatient treatment only used for a small proportion of patients. The aim is to promote genuine recovery to encourage those using the services to regain their lives through dedicated specialist teams who work closely with patients, their carers, their families and other organisations to put together a plan of care which suits each individual person.

The psychiatric rotation in Norfolk offers students an experience across the whole of the patient's care pathway covering hospital settings and community care as well as a range of specialties including forensic, older adult, learning disability and children's mental health settings.

Students are exposed to a wide range of mental health issues and receive daily clinical teaching on an informal basis together with organised teaching rounds and benefit from a dedicated SGU Teaching Fellow who provides regular focused teaching sessions and mentoring. Most importantly the rotation offers a friendly and welcoming environment in which to learn.

## Queen Elizabeth the Queen Mother Hospital

**Clinical Training Centre:** South East Clinical Training Centre

**Address:** St Peter's Road, Margate, Kent. CT9 4AN

**Telephone No:** 01843 225544

**Cores available:** Medicine, Obstetrics & Gynaecology, Paediatrics, Surgery, (Psychiatry at St Martin's Hospital)

**Electives Available:** See [Electives Offered at UK Hospitals](#)

**Website:** [www.ekhuft.nhs.uk](http://www.ekhuft.nhs.uk)

**Director of Medical Education:**

**Student Coordinator:** Kayleigh Howard

### **Contact Details:**

01843 225544 ext 7253637 (Telephone)

07977 020542 (Mobile)

[kayleigh.howard1@nhs.net](mailto:kayleigh.howard1@nhs.net)

**Accommodation type:** Single en-suite study bedroom, shared kitchen & lounge

**Accommodation cost per month:** £452

**Internet access in bedrooms:** Yes

**Immunisation requirements:** Diphtheria, Tetanus, Polio, Hep B, Rubella & TB

**Travel time to London by train:** 1 hour 40 minutes

### ***The Trust & the Hospital***

#### **Queen Elizabeth the Queen Mother Hospital**

East Kent Hospitals University NHS Foundation Trust is one of the largest hospital trusts in England, with five hospitals serving a local population of around 759,000 people. The Trust has a national and international reputation for delivering high quality specialist care, particularly in cancer, kidney disease, stroke and vascular services. The Queen Elizabeth the Queen Mother Hospital, Margate is an acute hospital with approximately 388 beds, providing a range of emergency and elective services and comprehensive trauma, orthopaedic, obstetrics, general surgery and paediatric services. The hospital has a specialist centre for gynaecological cancer and modern operating theatres, Intensive Therapy Unit (ITU) facilities, children's inpatient and outpatient facilities, a new cardiac catheter laboratory and cancer unit. QEQM has a post graduate teaching centre and staff accommodation. On site there are also co-located adult and elderly mental health facilities run by the Kent & Medway NHS and Social Care Partnership Trust. The hospital is part of a teaching Trust and plays a vital role in the education and training of doctors, nurses and other healthcare professionals, working closely with local universities and Kings College University in London.

## **St Martin's Hospital**

**Clinical Training Centre:** South East Clinical Training Centre

**Address:** Littlebourne Road, Canterbury, Kent. CT1 1TD

**Telephone No:** 01227 459371

**Cores available:** Psychiatry ONLY

**Electives Available:** Psychiatry

**Website:** [www.kmpt.nhs.uk/medical-education](http://www.kmpt.nhs.uk/medical-education)

**Director of Medical Education:** Dr Richard Brown

**Student Coordinator:** Katherine Dunning

#### **Contact Details:**

01622 933167 ext 553165 (Telephone)

[katherine.dunning@nhs.net](mailto:katherine.dunning@nhs.net)

**Accommodation type:** Single study bedroom at Kent and Canterbury Hospital

**Accommodation cost per month:** £502 Kent & Canterbury

**Internet access in bedrooms:** Yes, via exclusive use of a WiFi hotspot

**Immunisation requirements:** Diphtheria, Tetanus, Polio, Hep B, Rubella & TB

**Travel time to London by train:** 1 hour 30 minutes



### ***The Trust & the Hospital*** **St. Martin's Hospital**

Psychiatric Services in East Kent are provided by Kent & Medway Partnership Trust, which provides mental health services in the community and hospitals across Kent and Medway. The focus of British psychiatric care is in the community, to which hospitals are an occasional adjunct in a small proportion of patients. The psychiatric rotation teaches in the context of multidisciplinary care following the patients' care pathway between community and hospital. Students are exposed to a wide spectrum of patients in mental health and receive clinical teaching on an informal basis with organised teaching rounds by friendly enthusiastic consultants. There is a very active education centre with a varied and full programme.

## **William Harvey Hospital**

**Clinical Training Centre:** South East Clinical Training Centre

**Address:** Kennington Road, Willesborough, Ashford, Kent. TN24 0LZ

**Telephone No:** 01233 633331

**Cores Available:** Medicine, Obstetrics & Gynaecology, Paediatrics, Surgery (Psychiatry at St Martin's Hospital)

**Electives Available:** See [Electives Offered at UK Hospitals](#)

**Website:** [www.ekhuft.nhs.uk](http://www.ekhuft.nhs.uk)

**Director of Medical Education:** Dr Ciaran Crowe

**Student Coordinator:** Kayleigh Howard

#### **Contact Details:**

01843 225544 ext 7253637 (Telephone)

07977 020542 (Mobile)

[kayleigh.howard1@nhs.net](mailto:kayleigh.howard1@nhs.net)

**Accommodation type:** Single study bedroom in a 3 bed flat with a shared kitchen, lounge and bathroom in each flat.

**Accommodation cost per month:** £445.50 - £460.35

**Internet access in bedrooms:** Yes

**Immunisation requirements:** Hepatitis B titre levels, tetanus, polio, rubella, diphtheria and TB

**Travel time to London by train:** 35 minutes

### ***The Trust & the Hospital*** **William Harvey Hospital**

East Kent Hospitals University NHS Foundation Trust is one of the largest hospital trusts in England, with five hospitals serving a local population of around 759,000 people. The William Harvey Hospital in Ashford, Kent, is one of three acute hospitals forming the East Kent Hospitals Trust. The Trust provides a comprehensive range of acute and specialist services to the local area including General Medicine (Including a cardiology Catheter suite), General Surgery, Trauma and Orthopaedics, Paediatrics (including Special Care and a Neonatal Intensive Care Unit), Obstetrics & Gynaecology, ENT and

Ophthalmology. A single Head and Neck Unit for East Kent has recently been established with all specialist head and neck cancer surgery co-located on the site. The Education Centre has excellent facilities which include an extensive library. There is a full programme of educational activities on a wide variety of topics.

Onsite accommodation is available for students in Broomfield Residences at William Harvey hospital. Free wifi is available in accommodation and in the Education Centre. Students undertaking Psychiatry rotations are currently offered accommodation at the nearby Kent & Canterbury hospital site.

## Russells Hall Hospital

**Clinical Training Centre:** West Midlands Clinical Training Centre

**Address:** Dudley, West Midlands, DY1 2HQ

**Telephone No:** 01384 456111

**Cores available:** Medicine, Paediatrics, Psychiatry, Obstetrics & Gynaecology, Surgery

**Electives Available:** See [Electives Offered at UK Hospitals](#)

**Website:** [www.dgh.nhs.uk](http://www.dgh.nhs.uk)

**Director of Medical Education:** Prof Saudid Ishaq

**Student Coordinator:** Ellis Deakin

**Contact Details:**

01384 321095 Ext 1219 (Telephone)

[ellis.deakin@nhs.net](mailto:ellis.deakin@nhs.net)

**Accommodation type:** 3 or 4 bedroom shared units with common lounge and kitchen

**Accommodation cost per month:** £400

**Internet access in bedrooms:** Yes

**Immunisation requirements:** Hep B, Rubella and TB

**Travel time to London by train:** 1 hour 40 mins

### ***The Trust & the Hospital***

#### **Russells Hall Hospital**

Based in the heart of the West Midlands, The Dudley Group NHS Foundation Trust serves more than 400,000 people living in Dudley and the surrounding areas. The Trust provides a wide range of medical, surgical and rehabilitation services. The group is made up of three hospital sites, with one inpatient hospital (Russells Hall) located near the centre of Dudley and two outpatient hospitals (Corbett and Guest) located in Stourbridge and Dudley respectively. The Trust has services based firmly in the community for patients with long-term conditions, acute care needs, rehabilitation, end of life care and audiology. The hospitals are among some of the most technologically advanced in the country, where state-of-the-art equipment and modern, purpose-built buildings combine to create the highest standards of patient care.

# North Hampshire Hospital

**Clinical Training Centre:** Wessex Clinical Training Centre

**Address:** Aldermaston Road, Basingstoke, Hampshire. RG24 9NA

**Telephone No:** 01256 473202

**Cores Available:** Medicine, Obstetrics & Gynaecology, Paediatrics, Psychiatry, Surgery

**Electives Available:** See [Electives Offered at UK Hospitals](#)

**Website:** [www.hampshirehospitals.nhs.uk](http://www.hampshirehospitals.nhs.uk)

**Director of Medical Education:** Ms Amara Sohail

**Student Coordinator:** Fiona Stones

**Contact Details:** [01962 824851](tel:01962824851) (Telephone) [grenadian.students@hhft.nhs.uk](mailto:grenadian.students@hhft.nhs.uk)

**Accommodation type:** Four person shared flat, en-suite study bedroom

**Accommodation cost per month:** £500 - £549

**Internet access in bedrooms:** Yes

**Immunisation requirements:** Hep B, Rubella, Measles, Mumps, Polio, Tetanus, Varicella & TB

**Travel time to London by train:** 45 minutes

## ***The Trust & the Hospital*** **North Hampshire Hospital**

Hampshire Hospitals NHS Foundation Trust serves a population of approximately 600,000 across Hampshire and parts of West Berkshire. North Hampshire Hospital has around 450 beds and provides a full range of planned and emergency services including accident and emergency, general and specialist surgery, general medicine, intensive care, rehabilitation, chemotherapy, diagnostic services, maternity, neonatal, gynaecology, paediatric care and out patient clinics. These include specialist services for rare or complex illnesses for patients across the UK, including liver cancer, colorectal cancer and pseudomyxoma peritonei (a rare lower abdominal cancer). There is also a purpose built diagnosis and treatment centre (DTC) which opened in 2005. North Hampshire Hospital has second, fourth and final year medical students from the University of Southampton and final year students from St George's Hospital, London as well as electives from other parts of the United Kingdom in addition to taking St George's University students. The ARK Conference Centre adjacent to the department of postgraduate medical education hosts excellent weekly lectures, journal clubs and core training to support doctors' education.

# Poole General Hospital

**Clinical Training Centre:** Wessex Clinical Training Centre

**Address:** Longfleet Road, Poole, Dorset. BH15 2JB

**Telephone No:** 01202 665511

**Cores available:** General Practice (FM) only at The Adam Practice, Medicine, Obstetrics & Gynaecology, Paediatrics, Surgery (Psychiatry at St Ann's Hospital, Poole)

**Electives Available:** See [Electives Offered at UK Hospitals](#)

**Website:** [www.uhd.nhs.uk/hospitals-poole](http://www.uhd.nhs.uk/hospitals-poole)

**Director of Medical Education:** Dr Simon Crowther

**Student Coordinator:** Eve Harrison-Beck

**Contact Details:**

0300 019 8477 (Telephone)

[eve.harrison-beck@uhd.nhs.uk](mailto:eve.harrison-beck@uhd.nhs.uk)

[www.uhd.nhs.uk/hospitals-poole](http://www.uhd.nhs.uk/hospitals-poole)

**Accommodation type:** Single en suite study bedroom, shared kitchen

**Accommodation cost per month:** £504 at Poole General Hospital

**Internet access in bedrooms:** Yes

**Immunisation requirements:** Tetanus, Polio, Hep B, Diphtheria, Rubella & TB

**Travel time to London by train:** 2 hours

***The Trust & the Hospital***

**Poole General Hospital**

Poole Hospital is an acute general hospital based on the south coast of England. The trust employs around 3,600 staff. The hospital has a 24-hour major accident and emergency department and is the designated trauma unit for East Dorset, serving a population of around 500,000 people. In addition, the hospital's flagship Dorset Cancer Centre provides medical and clinical oncology services for the whole of Dorset, serving a total population of over 750,000. Both St Mary's Maternity Hospital and Forest Holme, the palliative care unit, are located a short walk from the main hospital.

Poole Hospital provides acute services for the local population of Poole, Purbeck and East Dorset, and is the lead provider for the Bournemouth, Poole and Christchurch conurbation for trauma, maternity, paediatrics and ENT services.

With a history of innovation, the Trust provides pioneering services across a range of clinical specialties. The hospital is a centre of excellence and training in keyhole surgery; our elderly care unit has received national acclaim for its pioneering model of multidisciplinary care; and the nurse-led medical investigations unit has been highlighted as a benchmark in nursing innovation.

## Royal Hampshire County Hospital

**Clinical Training Centre:** Wessex Clinical

Training Centre

**Address:** Romsey Road, Winchester, Hampshire. SO22 5DG

**Telephone No:** 01962 863535

**Cores available:** Medicine, Obstetrics & Gynaecology, Paediatrics, Psychiatry, Surgery

**Electives Available:** See [Electives Offered at UK Hospitals](#)

**Website:** [www.hampshirehospitals.nhs.uk](http://www.hampshirehospitals.nhs.uk)

**Director of Medical Education:** Dr Jimmy Chong

**Student Coordinator:** Fiona Stones

**Contact Details:** 01962 824851 (Telephone) [grenadian.students@hhft.nhs.uk](mailto:grenadian.students@hhft.nhs.uk)

**Accommodation type:** Single study bedroom, shared kitchen & bathroom

**Accommodation cost per month:** Limited Hospital Accommodation available at £450. Private Accommodation ranges from £800-1200

**Internet access in bedrooms:** Yes

**Immunisation requirements:** Hep B, Rubella, Measles, Mumps, Polio, Tetanus, Varicella & TB

### ***The Trust & the Hospital***

#### **Royal Hampshire County Hospital**

Hampshire Hospitals NHS Foundation Trust serves a population of approximately 600,000 across Hampshire and parts of West Berkshire in the South of England. Royal Hampshire County Hospital (RHCH) provides a full range of planned and emergency services including accident and emergency, general and specialist surgery, general medicine, intensive care, rehabilitation, chemotherapy, diagnostic services, maternity, neonatal, gynaecology, paediatric care and out-patient clinics. The site also houses Florence Portal House (which provides maternity, neonatal, breast screening and some gynaecology services) and an education centre.

In addition, Royal Hampshire County Hospital is pioneering the use of intraoperative radiotherapy for breast cancer treatment. Hampshire Hospitals NHS Foundation Trust has links with other nearby NHS Foundation Trusts for some specialised services. RHCH teaches third, fourth and final year medical students from Southampton University Medical School and also students on electives from other parts of the United Kingdom. Students from St George's University are fully integrated with these other medical students. The Education Centre has excellent facilities including an impressive library with a full range of relevant journals and books and internet access. Within the educational programme there are a number of tutorials, clinical skills instruction and grand rounds available for students on a regular basis.

## **St Ann's Hospital, Poole**

**Clinical Training Centre:** Wessex Clinical Training Centre

**Address:** 69 Haven Road, Canford Cliffs, Poole, Dorset. BH13 7LN

**Telephone No:** 01202 708881

**Cores available:** Psychiatry ONLY

**Electives Available:** Psychiatry ONLY

**Website:** [www.dorsethealthcare.nhs.uk](http://www.dorsethealthcare.nhs.uk)

**Director of Medical Education:** Dr Sudipto Das

**Student Coordinator:** Suzanne Hutchins

**Contact Details:**

01202 705557 (Telephone)

[suzanne.hutchins@nhs.net](mailto:suzanne.hutchins@nhs.net)

**Accommodation type:** Single ensuite study bedroom at Poole General Hospital

**Accommodation cost per month:** £504 at Poole General Hospital

**Internet access in bedrooms:** Yes

**Immunisation requirements:** Tetanus, Polio, Hep B, Diphtheria, Rubella & TB

**Travel time to London by train:** 2 hours

***The Trust & the Hospital***

**St. Ann's Hospital, Poole**

Psychiatry rotations can be undertaken at St Ann's Hospital which is approximately 3 miles from Poole General Hospital (transport costs must be met by the student). The Hospital has an acute admission ward for all newly admitted patients, two wards (one male, one female) for patients needing intensive treatment, a ward for older patients with functional mental health problems, an Intensive Care Unit and a forensic ward (low secure). People admitted to St Ann's Hospital are usually in the most acute phase of their illness. The aim of all staff is to stabilise their health needs and return them back to their own home where they will be supported by the Crisis Team and/or their Community Mental Health Team in their own familiar surroundings.

## The Adam Practice

**Clinical Training Centre:** Wessex Clinical Training Centre

**Address:** Poole Surgery, 117 Longfleet Road

**Telephone No:** 01202 673159

**Cores available:** General Practice (FM) only

**Electives Available:** General Practice (FM) only

**Website:** [www.adampractice.co.uk](http://www.adampractice.co.uk)

**Clerkship Director:** Dr Tim Owen

**Student Coordinator:** Matthew Keating

**Contact Details:**

01202 673159 (Telephone)

[matthew.keating@dorsetgp.nhs.uk](mailto:matthew.keating@dorsetgp.nhs.uk)

**Accommodation type:** At Poole Hospital, single en-suite study bedroom, shared kitchen

**Accommodation cost per month:** £504

**Internet access in bedrooms:** Yes

**Immunisation requirements:** Tetanus, Polio, Hep B, Diphtheria, Rubella & TB

**Travel time to London by train:** 2 hours

### ***The Trust & the Hospital*** **The Adam Practice**

The Adam Practice is located on the sunny south coast of the UK in Poole, Dorset. It's within easy reach of beautiful countryside, ancient castles and the second largest natural harbour in the world. Poole and the adjacent town of Bournemouth make up a vibrant scene with a range of beach side restaurants and award- winning coastlines home to the famous Jurassic Coast. We operate across 4 sites in Poole, Upton, Hamworthy and Lytchett Matravers and care for a patient list size of 34,000. There are 16 GP partners and 5 salaried GPs. All 4 of our sites are training practices and the practice accommodates medical students, student nurses and GP trainees. Our GPs have support from a variety of clinical colleagues including a Clinical Pharmacist, Nurse Practitioners and Practice Nurses working across our sites. We are also an accredited Research Centre and we were recently awarded an Outstanding by the Care Quality Commission.

During a placement with The Adam Practice, St George's Students will experience a wide range of conditions presented in primary care. There is a dedicated GP Lead and Deputy on each site. We offer specialist clinics including Minor Ops, Vasectomy, Paediatrics, Allergy and Travel which students have the opportunity to sit in with as well as going on home visits to see patients in the community.

## Electives Offered at UK Hospitals

Electives	Norfolk & Norwich UH	North Hampshire	North Middlesex UH	Poole	Royal Hampshire	Russells Hall	Stoke Mandeville	Watford	William Harvey
AAU		X		X	X	X		X	X
AMU	X	X	X	X	X	X			X
Anaesthetics	X	X	X	X	X	X	X	X	X
Breast Surgery	X	X	X	X	X	X	X	X	
Cardiology	X	X	X	X	X	X		X	X*
Colo-Rectal Surgery	X	X	X	X	X	X	X	X	
Day Surgery		X		X	X		X	X	
Dermatology	X	X		X		X		X	X*
Elderly Care	X	X	X	X	X	X	X	X	X
Emergency Care			X	X	X	X			X
Emergency Medicine	X	X	X	X	X	X	X	X	X
Endocrinology	X	X	X	X	X	X	X	X	
ENT	X	X		X	X	X	X	X	X
GI	X	X	X	X	X	X	X	X	
GU Medicine	X							X	
Haematology	X	X	X	X	X	X	X	X	
Histopathology		X		X	X				
Infectious Diseases		X	X		X				

ITU/Critical care	X	X	X	X	X	X		X	X
Max Fax Surgery				X					
Microbiology		X	X		X	X			
Neurology	X	X	X	X	X	X			X*
Obs & Gynae	X	X	X	X	X	X		X	X
Occupational Health		X			X				X
Oncology	X	X	X	X	X	X		X	
Ophthalmology	X	X	X		X	X	X	X	X
Orthopaedics	X	X	X	X	X	X	X	X	X*
Paediatrics	X	X	X	X	X	X		X	X
Pathology	X	X			X				
Plastic Surgery	X					X			
Psychiatry		X	X	X	X	X		X	
Radiology	X	X	X	X	X	X	X	X	X
Rehabilitation		X			X		X		X*
Renal Medicine	X	X	X		X	X			X*
Respiratory Medicine	X	X	X	X	X	X		X	X
Rheumatology	X	X	X	X	X	X	X	X	
Stroke Medicine		X		X	X	X	X	X	X
Surgery	X	X	X	X	X	X	X	X	X
Urology	X	X	X		X	X	X	X	X*
Vascular Surgery	X	X			X	X	X	X	X*

Blue = Surgery electives

Orange = Medicine electives

\*Electives available offsite at affiliated hospital

## UK Program Experiences

### A UK Director of Medical Education's Story

**Dr Jimmy Suiwai LI**

**VOON CHONG BA MB BCH BAO MD MRCPI FRCP**

I was born on the tropical island of Mauritius in 1966. Mauritius is a country of the Commonwealth which gained independence in 1968. My parents were immigrants from southern China who emigrated to Mauritius in the early 1950's in search of a better future during the cultural revolution in China.

I went to primary and secondary school in Mauritius winning a scholarship after finishing primary school. In 1986, I was offered a place to study Medicine at Trinity College Dublin where I graduated in 1992. Graduating in 1992 was special in many ways as it also marked the 400th anniversary of the foundation of Trinity College Dublin.

I was the first member of my family from both parents sides to go to University. In 1986, in addition to applying for medical school in the Republic of Ireland, I had also applied for medical school in France. I



was offered a place to study at the medical school in the University of Bordeaux. My plane ticket to Paris was booked but a week before I was meant to leave Mauritius, I received a phone call from Trinity College offering me a place there. Life would have been very different had this phone call not happened!

Following a year of internship (House officer post) at St James' hospital Dublin, I completed a 2-year medicine rotation as senior house officer in the same hospital scheme during which I completed the full MRCP exams. I was always interested in education. I was Clinical Tutor for Trinity College Dublin while working as registrar in Endocrinology and Diabetes at St James's Hospital Dublin. The role of the Clinical Tutor was mostly related to teaching bedside skills for the medical students and helping organize the final year exams. I took an early interest in the field of Diabetes and Endocrinology. During my third year as a medical student at St James' hospital Dublin, I was fascinated by the logic of endocrine feedback mechanisms, the use of this knowledge as a basis for diagnostic tests and treatment while seeing patients with drastic clinical features. I made up my mind then which speciality to spend the rest of life working in!

Following work as registrar in Endocrinology and Diabetes at St James' Hospital Dublin, I went to UK in 1998 to finish my Endocrinology and Diabetes specialist training within the Merseyside training scheme. During this time I also carried out clinical research in the area of growth hormone deficiency along with hydrocortisone replacement in the elderly with hypopituitarism. This led to an MD research degree awarded by the University of Liverpool in 2002.

In November 2000 I was appointed as Consultant Physician specialising in Diabetes and Endocrinology at the Royal Hampshire County Hospital Winchester and I have continued to take an active role in education. I have held the post of Royal College of Physician tutor from 2003 to 2012, being Chair of the Specialist Training Committee for General Internal Medicine for Wessex from 2006 to 2009, RCP General Internal Medicine adviser for Wessex. I was a member of the question writing group for the MRCP specialist certificate examination for Endocrinology and Diabetes from 2007 to 2010. Since 1997 I have been MRCP PACES examiner for the Royal College of Physicians London. I am now chair of examiners and have the opportunity to examine for the Royal College internationally.

My association with SGISOM started in 2008. I have been privileged to see the beautiful campus in Grenada when I was invited over to teach in 2008 and 2009. I was appointed Associate Professor of Medicine in 2009. Since Sep 2015 I have held the post of Clerkship Director for Medicine at The Royal Hampshire County Hospital in Winchester. In May 2017 I was appointed as Director of Medical Education and in October 2019 I was elected as UK Associate Chair for Medicine for SGISOM.

In addition to education, I have been passionate about improving systems of care and patient safety, having held the post of clinical governance lead for Medicine and Elderly Care at the Royal Hampshire County Hospital from 2002 to 2012. Since Jan 2012 I have held the post of Clinical Director for Speciality Medicine for Hampshire Hospitals NHS Foundation Trust. In February 2018 I was appointed Associate Medical Director for Governance for the Hampshire Hospitals NHS Trust.

I remain a full time practising clinician and have not forgotten why I originally chose Medicine as a career, which is to help patients in their journey in life. In addition to grateful patients and relatives, what is most rewarding to me is to see the happiness on the faces of medical students, junior doctors as well as colleagues when they have achieved what they have set themselves to do.

## My UK Experience – Derrick Lamount Mobley II

### **Derrick Lamount Mobley II**

Anticipated Graduation date: January 2024

My original plans were to complete my core rotations in the US because I wanted to be as close as possible to my momma's cooking. I grew up on a cattle farm in Southern Tennessee, and I love nothing more than a good home-cooked meal and cornbread. The most extensive thing life has taught me is that it never goes according to our plans. I was offered the opportunity to complete some of my core rotations in the UK, and everything fell into place.

Ms. Alison Allen is an angel in disguise, and the UK Clinical Team made me feel safe and trust in the process. I wasn't sure what hospital I wanted to be placed at, even though they gave me great resources and information about the areas. I was so blessed and grateful for how they handled the transition for me. They scheduled everything with the hospitals and arranged housing accommodations for me too.

I was placed at North Middlesex University Hospital in London for my Family Medicine, Obstetrics & Gynecology, and Pediatrics cores. My time at the hospital was outstanding. One of the best things I enjoyed during my rotations was that they always made me feel a part of the team, and the doctors were compassionate and knowledgeable. My southern accent is very thick, and I am not the most well-spoken man, but they were always patient with me and made me feel confident to speak up. The hospital pathology is diverse, the hands-on training is next level, and the library is fantastic.

I completed my Psychiatry core at St. Ann's Hospital in London and experienced the exact detail of teamwork and care. My psychiatry core was phenomenal because I could see different scheduled clinics; as a result, I could see many different patient presentations. During this rotation, I visited HMP Pentonville, an Alzheimer's clinic, an eating disorder clinic, a learning disability clinic, and a drug abuse clinic.

At this point, my six months were up, and it was time to head back home to TN. I arrived home and immediately applied for a visa to finish up the rest of 3rd year and 4th year in the UK. I am currently placed at Royal Hampshire County Hospital in Winchester to complete my internal medicine and surgery core and to finish up 4th- year electives. Once again, I have been blown away by the consultants and staff at the hospital. They are brilliant, humble, compassionate, and always make time for you. Even though I don't have any family in the UK, I know I can reach out to any of them for guidance and support. The pathology is also incredible here, and you see many textbook cases. The weekly teaching sessions help to consolidate the material, and the radiology sessions are invaluable. We discuss weekly clinical cases and follow up with physical examination skills.

Medicine is a humbling and daunting journey, but a support system like this makes all the difference in the world. The most significant concept about medicine is that you are not treating an illness or condition but rather treating a person with that illness or condition. We must always remember to keep medicine patient-centered and have humility and compassion. We always experience moments and seasons where we are deeply impacted and changed for the better; that's what my time in the UK has felt like.

*"One of the best things I enjoyed during my rotations was that they always made me feel a part of the team, and the doctors were compassionate and knowledgeable."*

## My UK Experience – Jayakrithi Krishnan

**Jayakrithi Krishnan**

Anticipated Graduation date: June 2024

I have been at North Middlesex University Hospital (NMUH) in London for most of my 3rd year and I could not be happier with my placement. I had initially planned on completing a couple of my core rotations here but I enjoyed my experience so much, I decided to stay. I have met other SGU students and also built rapport with some of the University College of London (UCL) students who also rotate at the hospital. NMUH fosters a great sense of community and I have felt welcomed from my first day here. The medical and administrative staff are both a delight to work with. Our student co-ordinator, Ms Carole Sammy is very accommodating and has offered a number of volunteer and clinical skills opportunities to help establish an all-rounded student experience. I have especially loved the diverse demographic of patients and range of medical presentations I have been able to see during my time here. The hospital is a true reflection of the multiculturalism seen in the city of London and not only has it made it extremely easy to get settled in but has also broadened my medical knowledge.

I just completed my Surgery Rotation and I am grateful for being given the opportunity to rotate throughout six subspecialties, being General, Urology, Ophthalmology, Orthopaedic Surgery, Upper GI and Colorectal. I was able to gain a lot of exposure to the various surgical subspecialties over the 12 weeks and this helped in successfully completing the rotation. I was given numerous opportunities to scrub into surgeries as well as perform basic clinical skills such as venipuncture, arterial blood gases, physical exams and thorough history taking in the wards and in clinic. The consultants, registrars and foundation year doctors are always willing to help and offer a ton of teaching sessions that better my understanding in preparation for the exam. The medical staff are very eager to help you gain confidence in the field of medicine and offer advice, when needed. They are also aware of the shelf exams we have to take at the end of each rotation and use every opportunity to help us learn.

An additional perk of my UK clinical experience is living in London. The public transportation is uber reliable so getting around is a breeze. The affordable accommodation provided by NMUH is steps away from the hospital and conveniently close to Central London. Living in England's capital city has given me an opportunity to partake in so much during my free time. I love the numerous dining options as well as museums, theatre shows, pop-up events and athletic activities the city has to offer. It is impossible not to find something fun to do outside of the rotation schedule.

I would advise students looking to rotate in the UK to seize this opportunity. It is a wonderful experience and helps in understanding the diversification of medicine and establishing the differences and similarities in how medicine is practiced in countries outside of North America. There is a lot of opportunity to grow, learn and build upon your clinical skills here and I am more than thankful for the chances I've been given and the ability to stay and study in the UK.

*"The hospital is a true reflection of the multiculturalism seen in the city of London and not only has it made it extremely easy to get settled in but has also broadened my medical knowledge."*

## My UK Experience – Jan Wen Wei

**Jan Wen Wei**

Anticipated Graduation date: June 2023

Hi, I am Jan Wen Wei. 4th-year medical student at North Middlesex University Hospital (NMUH), London, UK. I spent my entire third year of clinical training at NMUH and am finishing my fourth and final year at NMUH. I am fortunate to have decided to go to NMUH and discovered the excellent opportunities throughout my clinical training.

At NMUH, many generous and kind doctors, nurses, and other healthcare providers offer me plenty of opportunities to experience hands-on learning and observe various medical procedures and research. For example, I witnessed every surgical procedure in the surgery department. I assisted with life-saving CPR at the emergency department. I learned my suturing skills from the Gastroenterologist Surgeon, Dr. Pratheepan. The nurse Carole, at the Emergency department triage, taught me how to take blood and set up EKGs for patients. A midwife from OBGYN taught me how to read Cardiotocography. Dr. Yoong from OBGYN offered me the opportunity to work on a research paper with him and his team. Our research paper is on its way to being published soon. I learned about Echocardiograms and Angiograms from the Cardiologist Dr. Iqbal.

In addition, many departments provide weekly teaching sessions for medical students. For example, Dr. Menon, the head of the Internal Medicine core rotation for SGU, provides Uworld question sessions every Tuesday afternoon. Many fellow SGU students like myself who have completed the core rotation would re-attend these teaching sessions and share our experiences to enhance the quality of education.

Furthermore, the student coordinator at NMUH, Carole Sammy, is an incredibly warmhearted, thoughtful, and professional person to work with. She set up SGU students to get accommodation in London and the hospital induction to allow us to get assimilated. Moreover, Carole occasionally plans celebratory events at NMUH to let everyone feel welcome and enable SGU students from all departments to get acquainted at these events.

Of equal importance are the SGU UK Clinical Team, Ms. Alison Allen, Ms. Tina Sergeant, and NBME director Ms. Jennifer O'Hagan. They are very supportive of students. They respond quickly to assist us if there is any issue with booking a rotation or NBME. When a sudden strike happened in London or Prometrics was shut down due to Covid-19, the UK Clinical Team and Ms. O'Hagan would help fellow students and me rescheduling NBME testing. They always provide relief and assistance to all UK-based clinical students.

Finally, I am happy that I decided to come to North Middlesex University Hospital, London, United Kingdom. I am grateful to have the opportunity to learn from so many wonderful and inspiring people. The UK clinical opportunity to study in a different country makes my medical experience richer.

*"I am grateful to have the opportunity to learn from so many wonderful and inspiring people."*

## My UK Experience – Jose Verduzco

**Jose Verduzco**

Anticipated Graduation date: May 2023

I finished basic science in Grenada in December of 2019 and flew back to the U.S. to attend a USMLE STEP 1 prep course in January 2020. After the prep course ended, I considered returning to Grenada to study with a classmate in term 5. This was the same time all the students in Grenada were being told to depart the island for home due to the coming COVID-19 lockdowns.

I continued to try and study on my own at home during the lockdowns but wasn't having much success. I reached out to Dr. Clunes for advice, and she recommended going to the U.K. to start 3d year clinical rotations. It was great advice and I completed medicine and surgery rotations at Norfolk/Norwich University Hospital. I then moved to Basingstoke Hospital to finish my 3rd year rotations and have continued my 4th year electives as well. All the junior doctors as well as the registrars and consultants have been very helpful. If you make the staff aware of any specific skills you want to learn such as blood draw, cannulas, or suturing they will figure out a time to teach you. If you show interest and the desire to learn you will enjoy your time in the hospital.

Outside of the basic requirements for each rotation you have a lot of freedom in terms of what you want to see and do in the hospital. If you are interested in seeing procedures, such as PCI or ERCP, the staff is more than willing you let you observe if you give them a little bit of a notice. The option to observe procedures such as PCI, ERCP, hysterectomy, colonoscopy, endoscopy, and echocardiograms has helped increase my understanding of the material required for the shelf exams.

The ability to observe the delivery of socialized medicine has also broadened my perspective when compared to the private health care model used in the U.S. Being in the U.K. has also allowed me to travel during some of the long weekends and bank holidays during the year.

Being in hospital accommodations has also been convenient; I can literally walk to the hospital. Not having a car means I don't have to worry about traffic, the price of gas, parking or paying for car insurance, and the bus system allows me to get around town when I need to. The hospital accommodations are very nice, and the price includes internet and utilities, something that you would have to pay extra for in the U.S.

Overall, it was a great decision to come to the U.K. during COVID because it got me into the hospital, which helped with my studying and overall learning and allowed me to be close to and interact with

my classmates, something I was missing trying to study on my own back home. I would highly recommend completing some of your 3d year rotations in the U.K. It is truly a once in a lifetime opportunity and one you will not regret.

*"If you show interest and the desire to learn you will enjoy your time in the hospital."*

## My UK Experience – Salma Mirza

**Salma Mirza**

Anticipated Graduation date: June 2023

I am a 4th year student currently at North Middlesex Hospital in London. I had initially planned to do my Surgery core here but having had such an amazing experience at this hospital, I decided to extend my time and complete all my core rotations before going to the USA to complete some of my electives.

Prior to starting at North Middlesex, the support and organisation of UK Clinical Team, particularly Alison Allen, ensured student queries were addressed and they provided detailed information to allow a smooth transition into the clinical years. The team are always available for any queries you may have.

I was born and raised in Edinburgh and the UK is home for me. Having previously worked in the Medical Device industry for many years, supplying to NHS and private hospitals within the UK, I had always planned to undertake some rotations in the UK. The hospital serves a diverse patient population in London which provides a great learning experience and exposure to interesting pathology. Each specialty provided a thorough insight into the day to day running of the department. I attended outpatient clinics, assisted in theatre, and learnt how to perform basic clinical skills on the wards such as venepuncture and cannula insertion. I was able to spend time with Junior Doctors, Registrars and Consultants which provided an insight into the UK training pathway for various specialities. Everyone was exceptionally welcoming and were always delighted to have an eager Medical Student attend. Daily teaching sessions were provided by Consultants and Registrars, focussing on high yield topics for exams. I also had many opportunities to practice my suturing skills one on one during practical teaching sessions as well as becoming involved in research projects.

From my experience, dedication and enthusiasm does not go unnoticed and consultants will then ask you to attend interesting clinics/cases for you to learn. If there is a particular clinical skill you are looking to improve, the Junior doctors are very supportive and will let know of any patients requiring bloods, cannulas, catheters etc. The most enjoyable and exciting component of my rotations has been the time spent in surgery, assisting in a variety of procedures in which equipment I used to sell to Consultants was being used!

My advice to anyone starting clinicals is to be proactive and take charge of your learning and experience. Introduce yourselves to the secretaries who can provide valuable information in terms of consultant schedules. Find out when your consultant is on call, attend emergency theatres and get to know the juniors and registrars as they are always very keen for us to learn and have the best experience.

I chose North Middlesex as it is in London and travel into Central London is only 20 minutes! This is a great opportunity for students to experience the London lifestyle and visit the many tourist attractions the City has to offer.

I have thoroughly enjoyed my time at North Middlesex and being part of the team in various departments. I would highly recommend this hospital for an exceptional learning experience, and I am looking forward to continuing my final year electives here.

*"My advice to anyone starting clinicals is to be proactive and take charge of your learning and experience."*

## My UK Experience – Anthony Crisafio

**Anthony Crisafio**

Anticipated Graduation date: February 2023

Prior to medical school, I worked for a decade in healthcare. When I saw the opportunity to experience the NHS, I jumped at the chance. I wanted to see how another system worked and the chance to live in the UK. Unfortunately, the "seeing the UK/Europe" part of the plan got derailed by the pandemic.

I did my core rotations at NNUH and I have nothing but the best to say about the consultants, juniors, and staff. The educational environment is superb. Every team made sure that I was actively involved, had the chance to practice skills, and pushed me to develop a diagnosis and treatment plan. While it was an older and homogenous population, I had the chance to see a variety of different cases and a few rare diseases.

The highlights were my time with the pediatrics and emergency medicine teams. They were inclusive and educational forcing me out of my comfort zone to see patients as first clinician before joining to see the patient and develop a treatment plan. This greatly enhanced my learning and developed my clinical decision making.

Being able to see how the NHS operates has enhanced my understanding of how care is delivered and fostered interest in health policy. Coupled with my past US healthcare experience, this has broadened my views of medicine and made me a better doctor.

Beyond the outstanding clinical training experience, the UK Clin Ed team are amazing. They have been helpful in getting me set up with my core and elective rotations and are very responsive to emails.

## My UK Experience – Zuzana Magdolen

**Zuzana Magdolen**

Anticipated Graduation date: June 2023

As a medical student so much of our time is spent studying, in clinicals and trying to plan out our next steps. The UK program makes it easy to schedule rotations in departments that you are interested in. Also, you get live in the UK! I was fortunate enough to spend my first year of studies at the Northumbria campus before going to the Island. I loved my time in the UK, there is so much beauty, culture, history, and the people are all wonderful. After finishing with my basic sciences, I went on to do my 3rd year clinicals and some of my 4th year electives in the US before returning to the UK to finish off my medical education.

I am currently working at the Norfolk and Norwich Hospital in a cozy little town with so much to see. In terms of the hospital, I have been welcomed with open arms while I've rotated through the various departments. Everyone, including the consultants, residents, and nursing staff have all helped me get adjusted and have allowed me to get the most out of my experience. The structure in the UK is tailored very much to provide each student the ability to get the most out of their time in each specialty. If you want to see more or less of one department then you have full control of that. They love having students and are all very eager to teach so you will get the most out of your time.

I cannot speak for all hospitals in the UK, but from my experience thus far, there are far less students here and you get a lot of one-on-one time with residents and the consultants. This makes for a great learning experience, as you get more time to ask questions and see more patients.

I am very humbled and grateful to SGU that they have created a vast network of hospitals for us to be able to experience during our clinical years. I have learned so much in the short time I have spent here in the UK; it has truly been an invaluable experience.

## UK Training Days

---

### Introductory Workshop on the NBME Exam

Eligibility for graduation is now determined by successful completion of the clinical course by passing all six of the NBME subject exams in Medicine, Surgery, Paediatrics, Obstetrics & Gynaecology, Psychiatry and Family Medicine. Students must keep pace with a rigorous on-line clinical tutorial programme called Firecracker with a greatly enhanced emphasis on the acquisition of core medical knowledge. To assist students with their MCQ performance in these subject exams an NBME workshop has been arranged for all newly arrived 3rd year clinical students. This mandatory workshop takes place on a Saturday within 2-3 weeks of a student's arrival in the UK. It occurs eight times a year, and may be repeated on request.

### Emergency Medicine Simulation Course

A very popular one-day Emergency Medicine Simulation course is planned for all newly starting clinical students. This programme has been developed by Mr David Hodgkinson and is now being rolled out progressively to other Clinical Training Centres (CTCs) as simulation laboratory facilities expand. It too is mandatory, with very good feedback on its practical benefits.

## Office of Career Guidance in the UK

---

### OCG Contact Information

**Assistant Dean of Students for Academic Advising, Development & Support (AADS) UK**

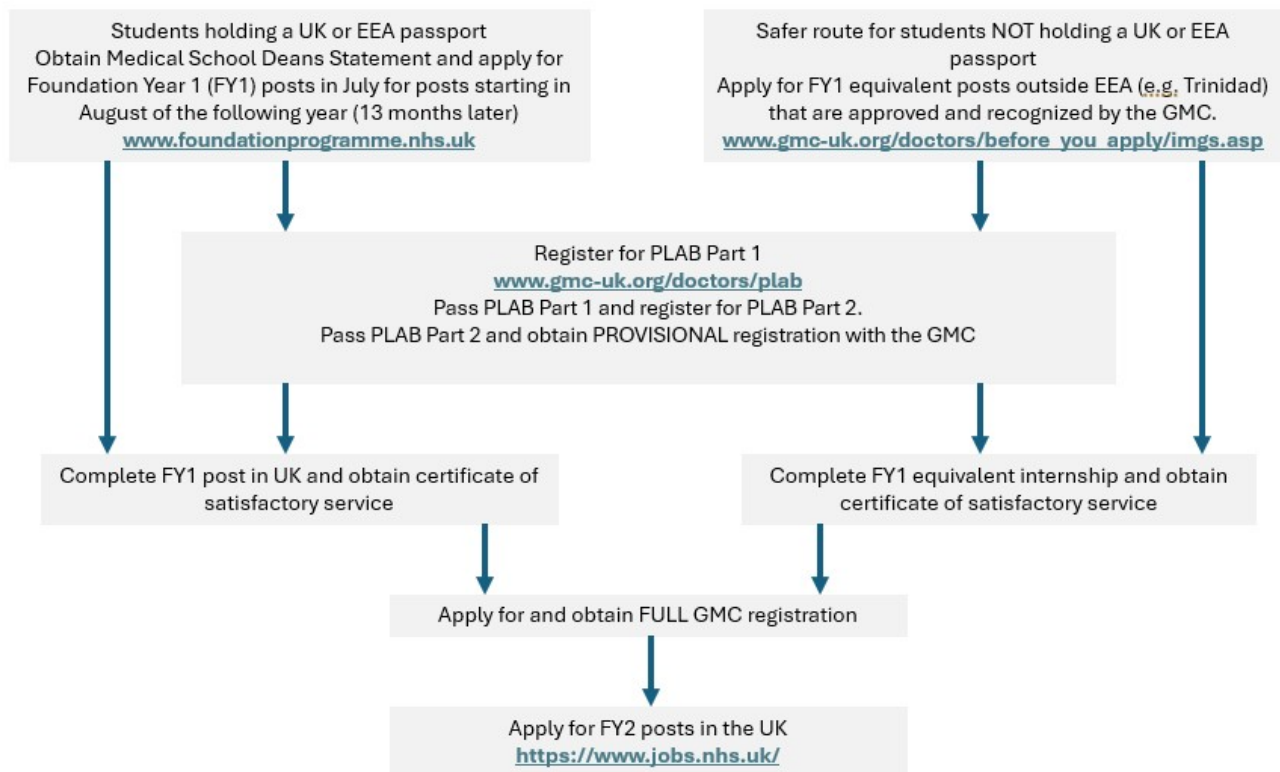
**Ms Beryl De Souza, MPhil BSc (Hons) MBBS FRCS**

[bdesouzl@sgu.edu](mailto:bdesouzl@sgu.edu)

[careerguidanceuk@sgu.edu](mailto:careerguidanceuk@sgu.edu)

### Pathways to UK Licensure for SGUSOM Students

Meet all the requirements for qualification (subsequent graduation from SGUSOM) and be in good financial standing with SGU (you may have reached this stage several weeks before your graduation). You must have studied for 2 years in Grenada. Students who hold a European or Swiss passport are exempt from sitting the PLAB exam and are required to complete a 5 year medical degree.



## Student Services

### Assistant Dean of Students UK – Mr Lee Dvorkin MD FRCS

*"I have been involved with St George's since 2011 when I took on the role of Surgery Clerkship Director at the North Middlesex University Hospital, London. I tutored and supervised SGU students in this role until I was appointed Director of Medical Education in 2018, a post I still hold and very much enjoy."*

*"In 2023 I served on the SGU executive committee but had to stand down when I was appointed Assistant Dean of Students. Since this appointment my work has been to ensure the academic and pastoral development of all our students and, with the UK Associate Dean, other members of the UK Deans Council and wider faculty, to further evolve the teaching programme in the UK. It is a privilege for me to be associated with SGU and to support the development of so many students who, after graduation, go on to contribute so much to healthcare all around the world."*

Mr Dvorkin can be **contacted** through the UK Office or via email at [lee.dvorkin@nhs.net](mailto:lee.dvorkin@nhs.net) / [ldvorkin@sgu.edu](mailto:ldvorkin@sgu.edu)

### UK Clinical Programme Counsellor – Hillary Ratna

*"Don't wait for the pressure to build up! Adjusting to a new country can be hard, especially if you feel you are on your own. Home is far away and so is the campus with your network of supportive friends. If you need someone to talk to, there is someone here."*



Hillary can be contacted 7 days a week from 9.30am – 9.30pm as follows: Mobile: 07956 803 757, Email: [hillaryratna@gmail.com](mailto:hillaryratna@gmail.com)

The counselling service is available for all SGUSOM students attached to UK Hospitals, it is completely confidential and the cost is covered by the University. The aim is to give you a chance to discuss any difficulties you may experience in a safe and supportive environment. The UK Counsellor, Hillary Ratna, is a qualified counsellor with many years experience of working with American and other international students. She is American herself and a long-term resident in Britain. She has an office in North West London, a five minute walk from Golders Green tube station (Northern Line, Edgware branch). If you are placed at a hospital outside London and it is too far or too expensive for you to visit Hillary, you can use the counselling service as a 'helpline' and talk things over by telephone. When you phone Hillary she will be happy to call you back. Your conversations with the counsellor remain completely confidential and no-one is informed. Your DME will not know unless you choose to tell him/her about it and your assessment grades will not be affected.

## SGISM Mentoring Program

---

### SGISM Mentoring Programme in the UK

The SGISM mentoring programme for students in the UK was launched at the beginning of October 2014. The objective of this mentoring programme is to promote the development of self-confidence and professional achievement for you to progress through your Clinical training and thereafter in your chosen career paths. As mentoring relationships in both Universities and Medical Schools in the US and UK have been proven to be an excellent way to enhance professional growth, St George's International School of Medicine (SGISM) strongly supports mentoring activities. SGISM have compiled two handbooks – one for mentors and one for mentees as part of the SGISM Mentoring Programme. All the necessary administration needed for the mentoring scheme is provided in the SGISM Mentee and Mentor booklets which are available on the UK Clinical Programme section of the SGUSOM website. The mentoring scheme provides support to you in addition to the support offered by the Office of Career Guidance. In addition, to this voluntary mentorship scheme the UK Faculty provide tutorials for NBME exams and UWorld questions to support the students.

For any further information please get in touch with Ms Beryl De Souza – [bdesouz1@sgu.edu](mailto:bdesouz1@sgu.edu)

## A to Z of Other Information

---

### Accommodation

Single accommodation will be organised for you when your placement is arranged. Hospitals provide accommodation close to or within the hospital complex. Charges vary significantly depending on the type and location. The cost varies between £331 (US\$424) and £992.00 (US\$1280) per month. Information about hospital accommodation will be sent to you with your placement letter for that hospital. Married accommodation is **NOT** provided by the affiliated hospitals and if you are bringing your partner/ family to the UK you can expect to have to find your own in the private sector. This can be expensive and you may also have to commit yourself to a six month tenancy agreement. You must let us know if you do not require hospital accommodation.

# Accommodation Costs

Hospital	Approx. per month
Norfolk & Norwich University Hospital	£300-£550
Hellesdon Hospital	£300-£550
North Hampshire Hospital	£500-£599
N. Middlesex University Hospital / St Ann's Hospital London/Lawrence House	£662-922
Poole General Hospital / St Ann's Hospital Poole	£504
Queen Elizabeth the Queen Mother Hospital, Margate/Faversham Medical Practice	£452
Royal Hampshire County Hospital	£450
Russells Hall Hospital	£400
Sheepcot Medical Centre	£500
St Martin's Hospital, Canterbury	£502
Stoke Mandeville Hospital/Berrycroft Medical Centre	£560
The Adam Practice	£504
Watford General Hospital	£500
William Harvey Hospital/Faversham Medical Practice	£445.50-£460.35

## Banking

US\$ cheques can take between 4 to 6 weeks to clear if presented at a UK bank. You might find it easier to have your loan cheque paid into your US bank account and then transfer the money you require to a UK bank account. If you are staying in the UK for only a short time, it may be easier to rely on a credit card and travellers cheques.

## Clothing/Dress Code

It is important that staff at all levels and disciplines including students, portray a positive and professional image and act as professional role models for patients and visitors. It is also important that any clothing or accessories worn by students do not cause offence to patients, visitors or colleagues i.e. t-shirts with inappropriate logos, excess cleavage on view etc. All clinical staff should be 'bare below the elbows' when carrying out clinical duties with direct patient contact, this includes ward rounds. All staff are required to adhere to this policy when entering clinical areas. The following contains key infection control elements that are compulsory.

### Key requirements are:

- No White Coats
- Neck ties, if worn, must be removed or tucked in (other than bow ties) when delivering direct patient care.
- Ideally wear short sleeved shirts or roll sleeves up above the elbow when delivering any hands on care. Cardigans, jumpers, sweatshirts etc. must be removed prior to any clinical activity and patient contact.
- Do not wear any hand jewellery/wristwatch apart from a plain wedding band (if desired/appropriate). Denim/Jean's are not permitted
- Students must wear Identity badges at all times

### Acceptable for work wear:

- Skirts and dress.

- Smart but casual trousers/city shorts - not denim. V neck or round neck jumper.
- Low heeled/ flat shoes.
- Short or long-sleeved shirts/blouses or polo shirts

## Concerns/Complaints

The lines of communication for dealing with a complaint or concern while you are attached to a clinical site in the UK are as follows:

- If your concern is of an academic nature you should first try to resolve this with the Consultant to whom you are attached. For example, you may feel that your schedule needs revisions or you would like to have more exposure to certain aspects of the rotation. If the matter does not get resolved you should make an appointment to meet with the DME at the hospital to discuss the matter. In most cases this will lead to a satisfactory outcome. However, if this is not the case then please write directly to Mr Lee Dvorkin, Assistant Dean of Students - [ldvorkin@sgu.edu](mailto:ldvorkin@sgu.edu).
- If your concern is of an administrative nature, e.g. accommodation problems, a need for leave of absence during a rotation, etc, you should first contact the SGUSOM Student Co-ordinator at the hospital to which you are attached. They will decide if the concern can be dealt with locally, if the matter should be referred to the DME, or if the UK Office needs to be involved. You can always contact the SGU Dean of Students Office - [dos@sgu.edu](mailto:dos@sgu.edu), or Mr Lee Dvorkin, Assistant Dean of Students - [ldvorkin@sgu.edu](mailto:ldvorkin@sgu.edu).
- If you are having personal difficulties of any kind and would like to speak to someone about these while you are in the UK, you should contact the confidential Student Counselling Service provided for SGUSOM students in the UK (see page 44 for details). Please contact Hillary Ratna on 0208 455 1069 or 07956 803 757 or [hillaryratna@gmail.com](mailto:hillaryratna@gmail.com). You can always contact the SGU Dean of Students Office - [dos@sgu.edu](mailto:dos@sgu.edu), or Mr Lee Dvorkin, Assistant Dean of Students - [ldvorkin@sgu.edu](mailto:ldvorkin@sgu.edu).

## Currency

The currency is the £ Sterling and the value of this fluctuates against the dollar. If you are staying for more than one rotation it is usually more convenient to open a bank account, at no charge, at any of the major banks, for example Lloyds TSB, NatWest, Barclays or HSBC (see [Banking](#) section for more information).

## Electricity

240 volts. Sockets are 3-pin flat.

## Electronic Log (PEL)

All students must keep a daily electronic log of the patients encountered during their core clerkships. This log is web-based and accessed through 'SGU Portal'. It is recommended that the log book be kept current on a daily basis. This log serves multiple functions and will be used in different ways and for different purposes by students, by the clinical faculty at affiliated hospital and by the School's administration and Curriculum Committee.

## Evaluation of Programmes

Students are required to complete an online evaluation at the end of each core rotation which is evaluated by the Office of Clinical Studies. Your final grade will not be released until the questionnaire has been completed.

## Insurance

We would advise students to ensure that they have taken out an adequate insurance policy to cover personal accident and personal effects whilst they are travelling and residing in the UK.

## Licensure Applications

Any licensure application forms should be sent to the UK Office for processing. . Please do not ask individual Consultants to sign licensure forms. The Licensing Authorities in the United States have very specific requirements and hold a specimen signature for the designated signatories at each hospital.

## Medical Treatment

From April 2015 the UK Government introduced the Immigration Health Surcharge for all temporary non EEA migrants coming to the UK for more than 6 months. This entitles you to access the NHS on the same terms as a permanent UK resident. If you are not covered by the IHS then you will be treated as an overseas visitor.

If you need medical treatment while you are in the UK, you will be treated as an overseas visitor. This means that you would be entitled to obtain health care in an emergency from a General Practitioner (GP) who may charge you for the consultation.

If you are living in the UK for a year or more, you may wish to register with a GP but this may only be appropriate if you are staying in the same area for the duration of your attachments. In addition, if you need hospital treatment, you will be treated as an overseas visitor and may be charged for your treatment. You are required to have your own medical insurance to cover this.

## Payment of Accounts

Students are reminded that all outstanding accounts for accommodation charges, etc, must be settled in full at the hospital before leaving that hospital either to return to the US or to undergo further rotations at another hospital in the UK. Failure to settle outstanding accounts not only jeopardises the good relationship between St George's and the UK hospitals, but can also cause unnecessary delay in setting up further rotations for a student and may even cause the student's graduation to be postponed until settlement of the account has been made. Likewise, all library books, bleeps, keys, etc, must be returned to the appropriate department before leaving the hospital.

## Registration with the Police

When arriving in the UK, students may be required to register with the Police. If you are required to register, this requirement will be written in your passport and you must register within 7 days of your

arrival in the United Kingdom. To register you will need your passport and the registration fee of £34. Please contact your local Police Station. Failure to register could result in deportation or refusal for re-entry into the UK.

## SGUSOM Student Membership of the British Medical Association (BMA)

Medical students from St George's University School of Medicine who are studying on the UK Clinical Training Programme are eligible to apply for a student BMA membership for 1 year. By providing learning and revision tools, as well as guidance on the latest ethical and professional issues, the BMA can help you on the road to becoming a qualified doctor.

### **Membership benefits include:**

- Students BMJ (British Medical Journal) and Student BMA News delivered monthly
- Free Access to Online Examination learning resources
- Discounted medical kit, including a voucher entitling you to a substantially discounted Littman Classic IISE Stethoscope!

To join the BMA please access the website via <http://www.bma.org.uk>

## SGUSOM Student Membership of the Royal Society of Medicine (RSM)

Medical students from St George's University School of Medicine while studying on the UK Clinical Training Programme are eligible to apply for membership of the student section of the Royal Society of Medicine in London. The RSM has the finest postgraduate library in Europe.

To apply for membership please contact:

The Royal Society of Medicine, 1 Wimpole Street, London W1G 0AE. <http://www.rsm.ac.uk>

## Signature of School Official

While you are in the UK you may require the signature of a School Official. This can be obtained by emailing the Associate Dean of Clinical Studies UK, c/o the UK Office. The School seal is also held at the UK Office.

## Student Reimbursements

SGUSOM students can claim back the cost of travelling to and from NBME exams and Study Days. To make a claim you must complete and return the reimbursement claim form available from the UK Office along with your travel receipts within 3 months of the travel taking place. Payments are made electronically to UK or US bank accounts as per student request.

# Transport

You will arrive at either Gatwick or Heathrow airports. Public transport is readily available from both, either by bus or train, into the centre of London where you can connect with trains to all parts of the country. Both airports are approximately 45 minutes from the centre of London by public transport. Students who are assigned to Russells Hall Hospital may wish to consider flying into Birmingham Airport.

Trains in the UK are one of the best means of transport, although the bus service is usually cheaper. Cars may be hired at the airports from rental firms and delivered to local depots when you arrive at your destination.

Once you are in the UK you may apply for a 'Student Railcard' which currently costs £30 (US\$ 39). This entitles you to a 33% discount on some UK trains for a period of one year.

Forms are available from any train station or online at [www.16-25railcard.co.uk](http://www.16-25railcard.co.uk). You will require two passport photographs and proof that you are a full-time student (available from the UK Office on request).

Alternatively, a 'Network Card' may be appropriate for your needs. There are many cards available to enable students to travel at reduced rates on public transport, i.e. Oyster cards in London.

## Textbooks & Web Based Educational Assignments for Independent Learning

All 3rd year core rotations require completion of web based assignments to complete a student's portfolio for the rotation. These are principally, AMBOSS, Sakai cases, DOCCOM Communication Skills modules and UWorld questions. Please refer to the Clinical Training Manual for details.

Reading should proceed on four levels, each with a different goal. Reading about your patient in order to "learn from your patients" and to develop a deeper understanding of the comprehensive issues affecting patient diagnosis and care. A systematic and thorough reading about the overall field of internal medicine in order to prepare for the end of clerkship NBME exam and the Step 2 CK. This cannot be over emphasized. Detailed in depth reading about specific topics of interest and for assignments.

A review of basic science and relevant research in order to reinforce the fundamental principles of clinical medicine and understand advances in patient care.

CORE	TEXTBOOK	AUTHOR
MEDICINE	See <a href="#">Clinical Training Manual - Internal Medicine</a>	
OB/GYN	"Obstetrics/Gynaecology for the Medical Student" Most Recent Edition (Required) See <a href="#">Clinical Training Manual - Obstetrics and Gynecology</a>	Beckmann et al Publisher - Lippincott, Williams and Wilkins
PAEDIATRICS	"Pediatrics For Medical Students" Most Recent Edition (Required) See <a href="#">Clinical Training Manual - Pediatrics</a>	Bernstein, Shelov Publisher - Lippincott, Williams and Wilkins
PSYCHIATRY	See <a href="#">Clinical Training Manual - Psychiatry</a>	

<b>SURGERY</b>	"Essentials of General Surgery"	
	Most Recent Edition	Lawrence Publisher - Lippincott, Williams and Wilkins
	"Essentials of Surgical Specialities"	
	Most Recent Edition (Required)	Lawrence Publisher - Lippincott, Williams and Wilkins
	See <a href="#">Clinical Training Manual - Surgery</a>	
<b>FAMILY MEDICINE</b>	See <a href="#">Clinical Training Manual - Family Medicine</a>	

## US Office - Great River

Need to call University Support Services? Call the toll free number 0800 169 9061 to be connected to a University Services representative (remember the time difference).

## Vaccinations and Immunisation Requirements

Most hospitals have their own Occupational Health requirements with which you must comply.

Frequently this involves the completion and return of the hospital's own health questionnaire prior to travelling to the UK. All hospitals require documentary evidence of your immunity to Hepatitis B and proof of vaccinations against Rubella and Poliomyelitis. If your health records are not complete you will not be able to enter the UK Clinical Programme. Students are responsible for producing written proof of immunisation programmes undertaken and dates. If you are not able to do this you will be responsible for the cost of a titre or the immunisation and you may not be allowed to participate in clinical work until the appropriate documentation is provided. It is therefore imperative that you comply with the requirements of the individual hospitals as specified on the information sheet that you will receive with your placement information.

## Water

In the UK water is safe to drink without boiling or chemical treatment. In some public places, e.g. public toilets, if the water is unsafe for drinking a sign will be displayed above the taps on the wall.



PRODUCED AND PUBLISHED BY:

St. George's International School of Medicine Limited

<https://mycampus.sgu.edu/group/uk-clinical/home>

All information correct at time of going to press. Subject to change at our discretion.